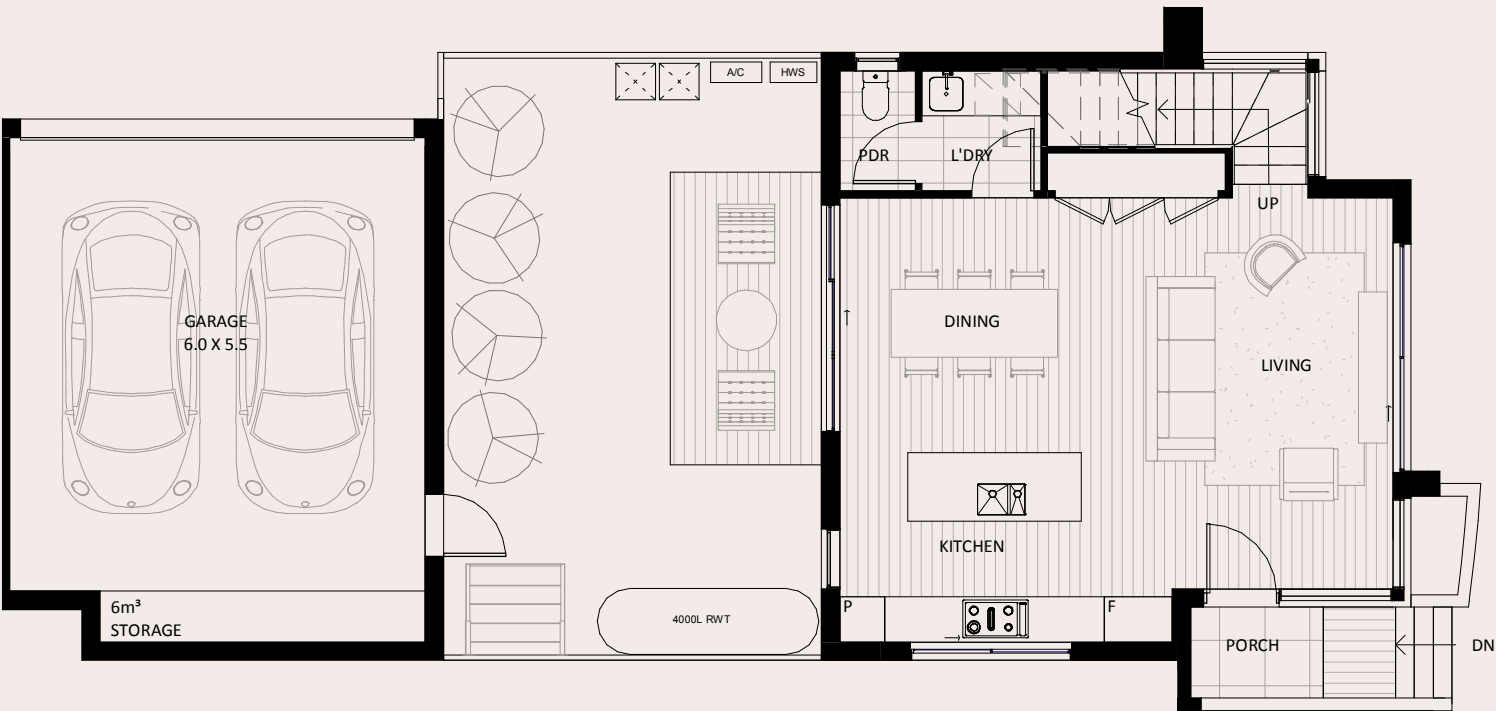
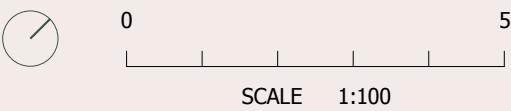
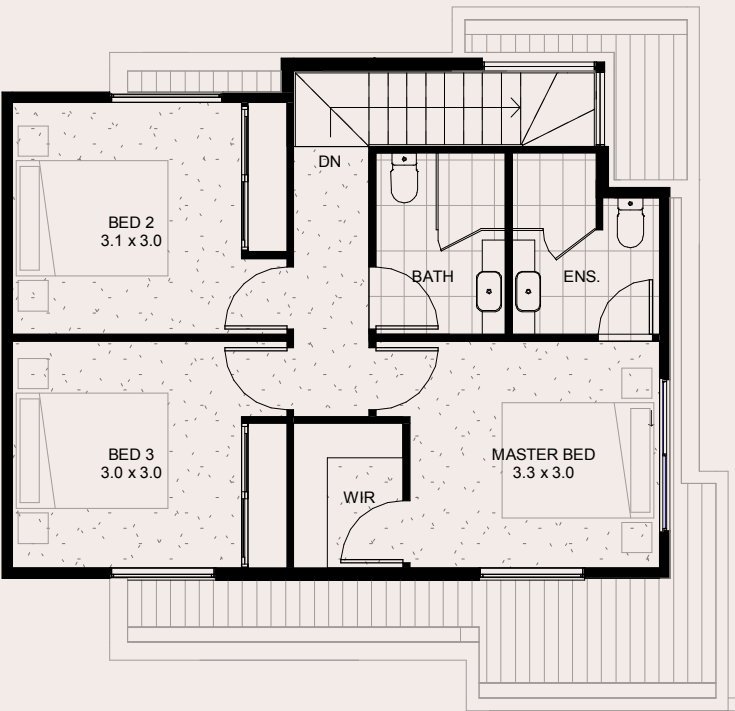


AIRDRIE COURT

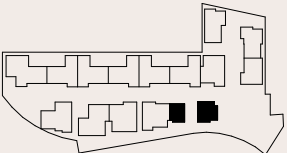


Ground Floor



First Floor

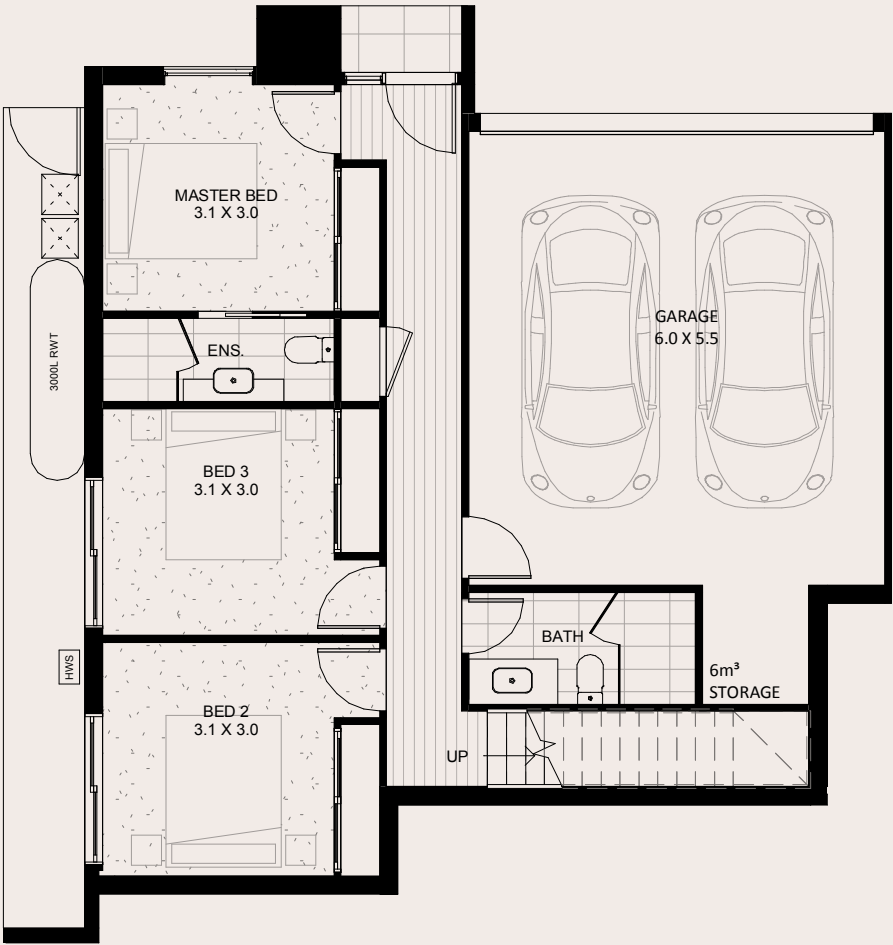
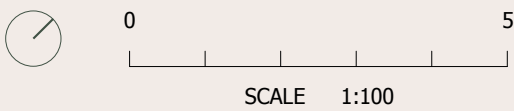
TOWNHOME 1	GROUND FLOOR	FIRST FLOOR	GARAGE	TOTAL AREA	LAND	OPEN SPACE
3 Bed 2.5 Bath 2 Car	59m ²	56m ²	41m ²	156m ²	221m ²	40m ²



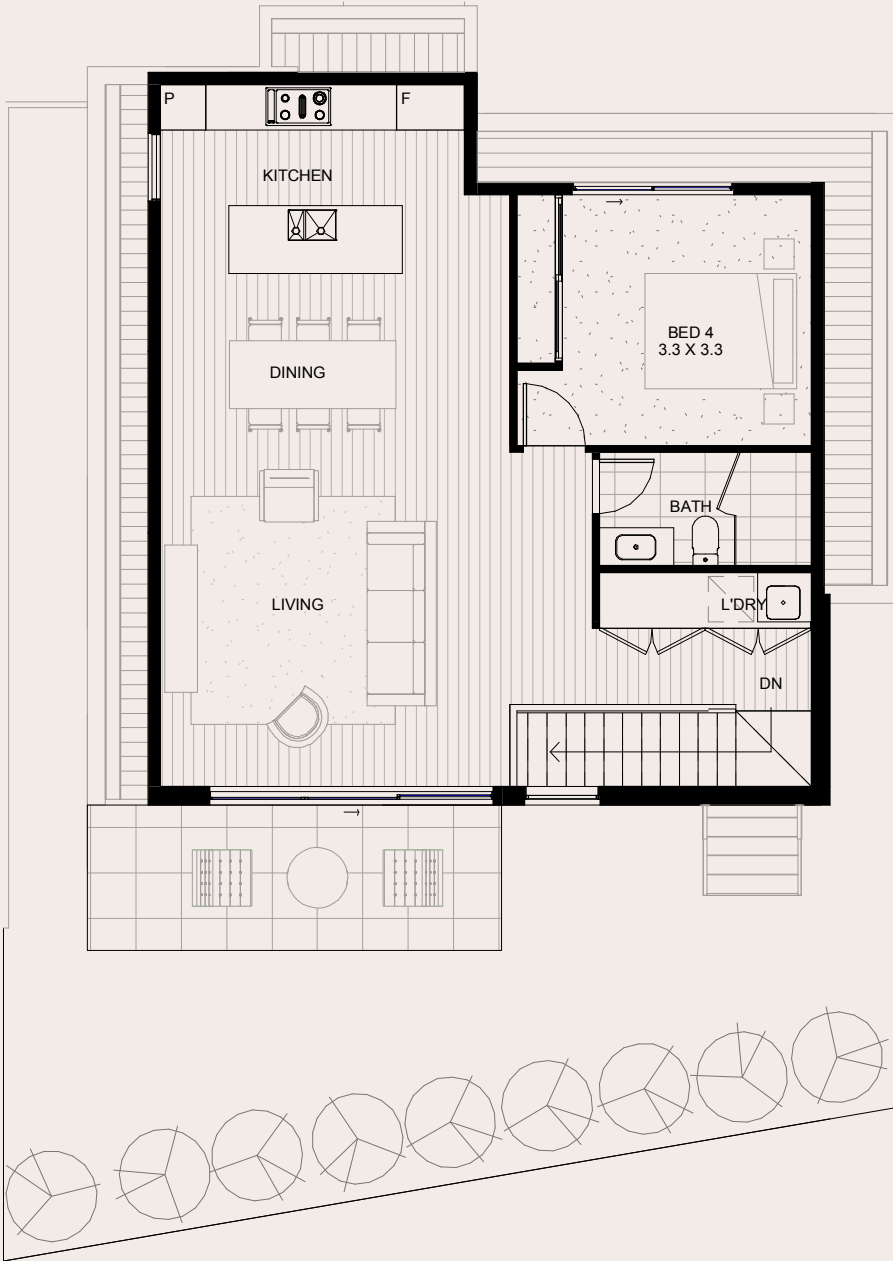
Airdrie Court

Note: All areas shown are approximate. The information contained herein has been obtained from sources we believe to be reliable and therefore have no reason to doubt it's accuracy. The vendor and it's agent will not be responsible for any error or mis-description which may appear. Prospective purchasers or leasees are therefore advised to make whatever investigations they deem necessary.

AIRDRIE COURT



Ground Floor



First Floor

TOWNHOME 2

4 Bed | 3 Bath | 2 Car

GROUND FLOOR

66m²

FIRST FLOOR

80m²

GARAGE

38m²

TOTAL AREA

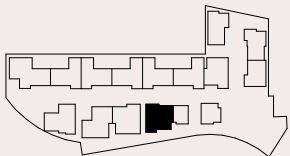
184m²

LAND

174m²

OPEN SPACE

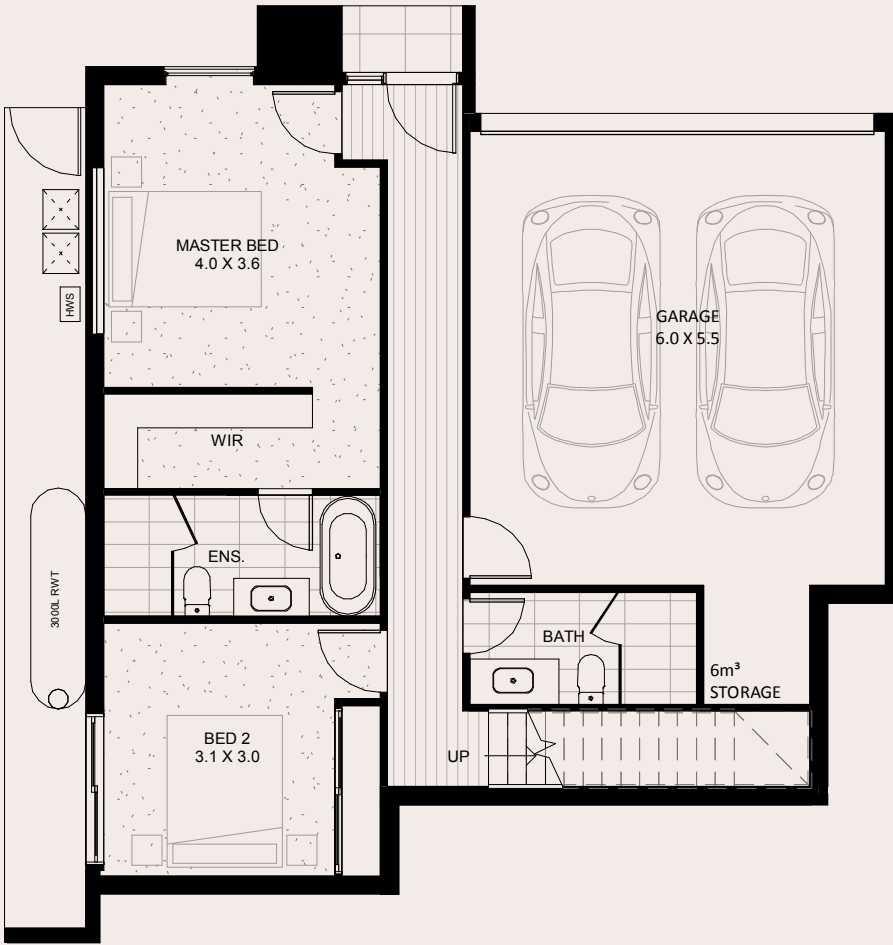
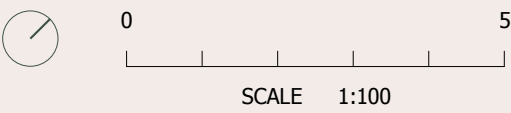
71m²



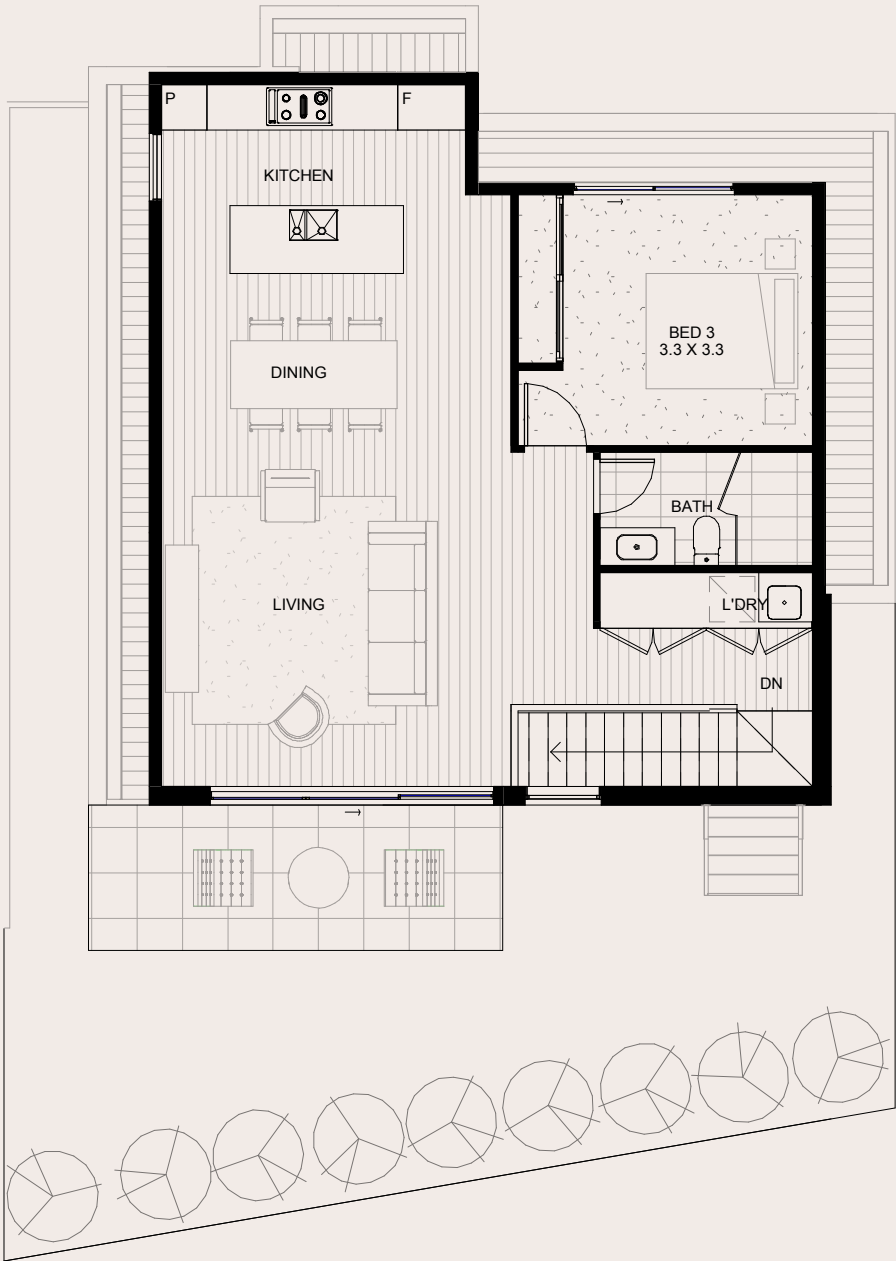
Airdrie Court

Note: All areas shown are approximate. The information contained herein has been obtained from sources we believe to be reliable and therefore have no reason to doubt it's accuracy. The vendor and it's agent will not be responsible for any error or mis-description which may appear. Prospective purchasers or leasees are therefore advised to make whatever investigations they deem necessary.

AIRDRIE COURT



Ground Floor



First Floor

TOWNHOME 2

3 Bed | 3 Bath | 2 Car

GROUND FLOOR

66m²

FIRST FLOOR

80m²

GARAGE

38m²

TOTAL AREA

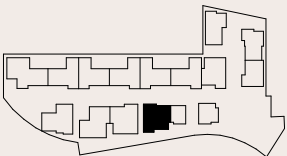
184m²

LAND

174m²

OPEN SPACE

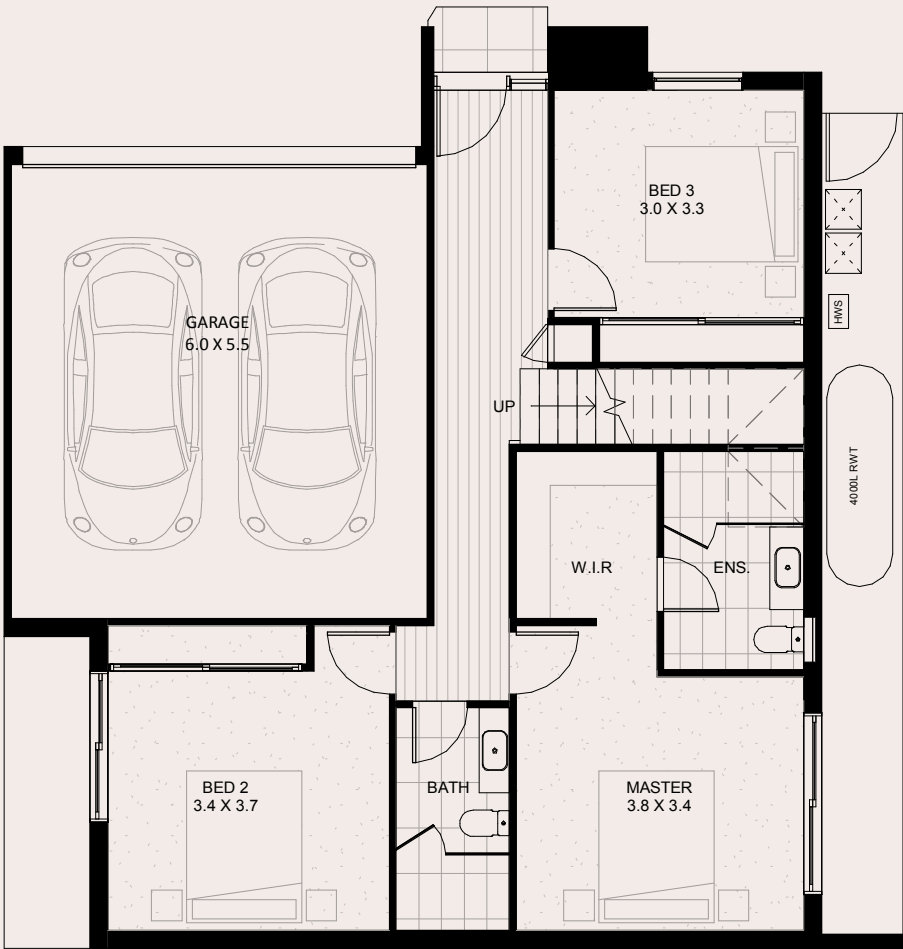
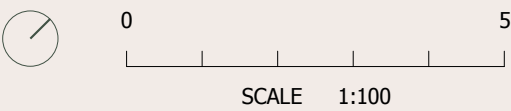
71m²



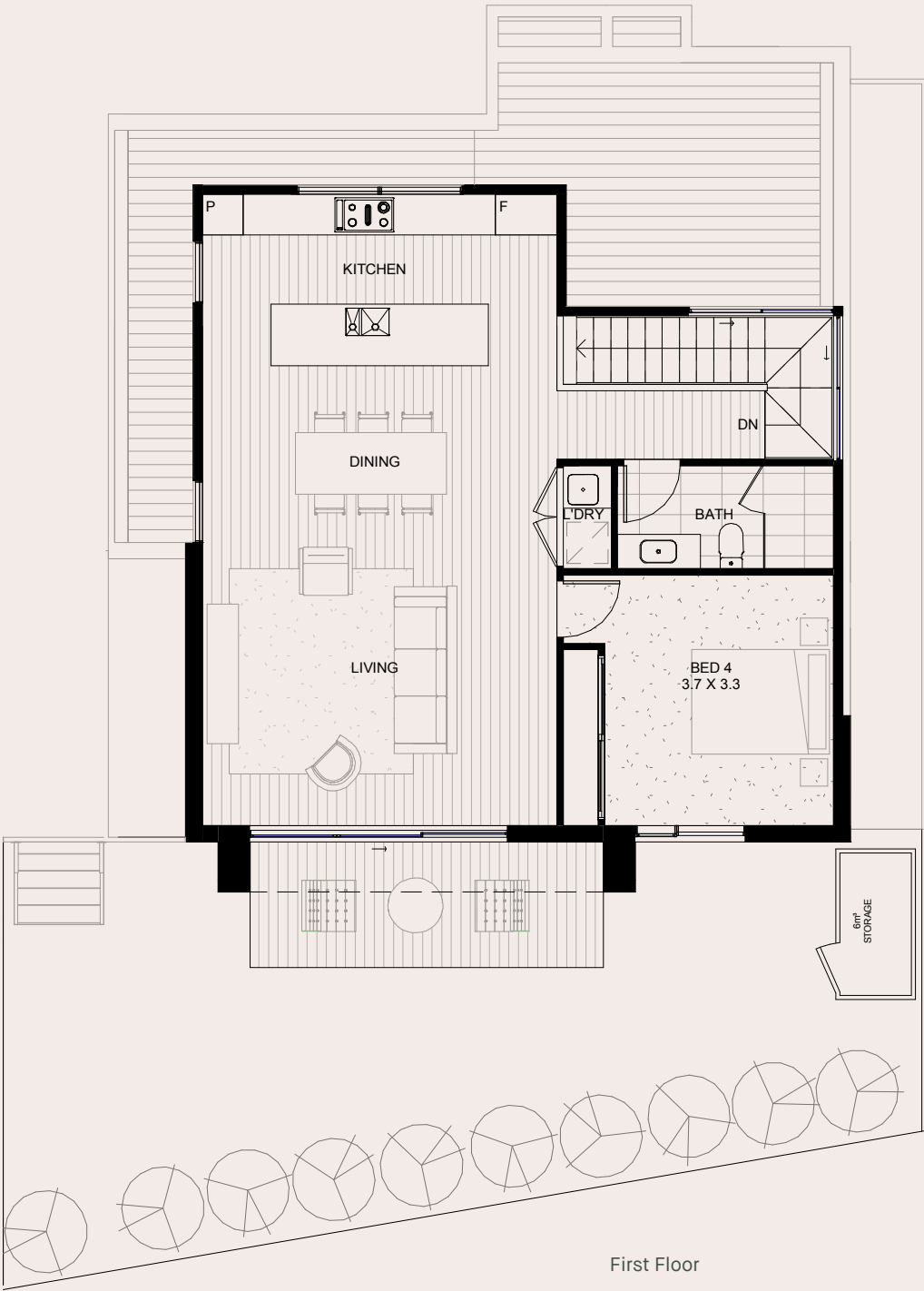
Airdrie Court

Note: All areas shown are approximate. The information contained herein has been obtained from sources we believe to be reliable and therefore have no reason to doubt it's accuracy. The vendor and it's agent will not be responsible for any error or mis-description which may appear. Prospective purchasers or leasees are therefore advised to make whatever investigations they deem necessary.

AIRDRIE COURT

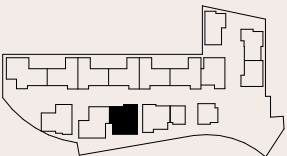


Ground Floor



First Floor

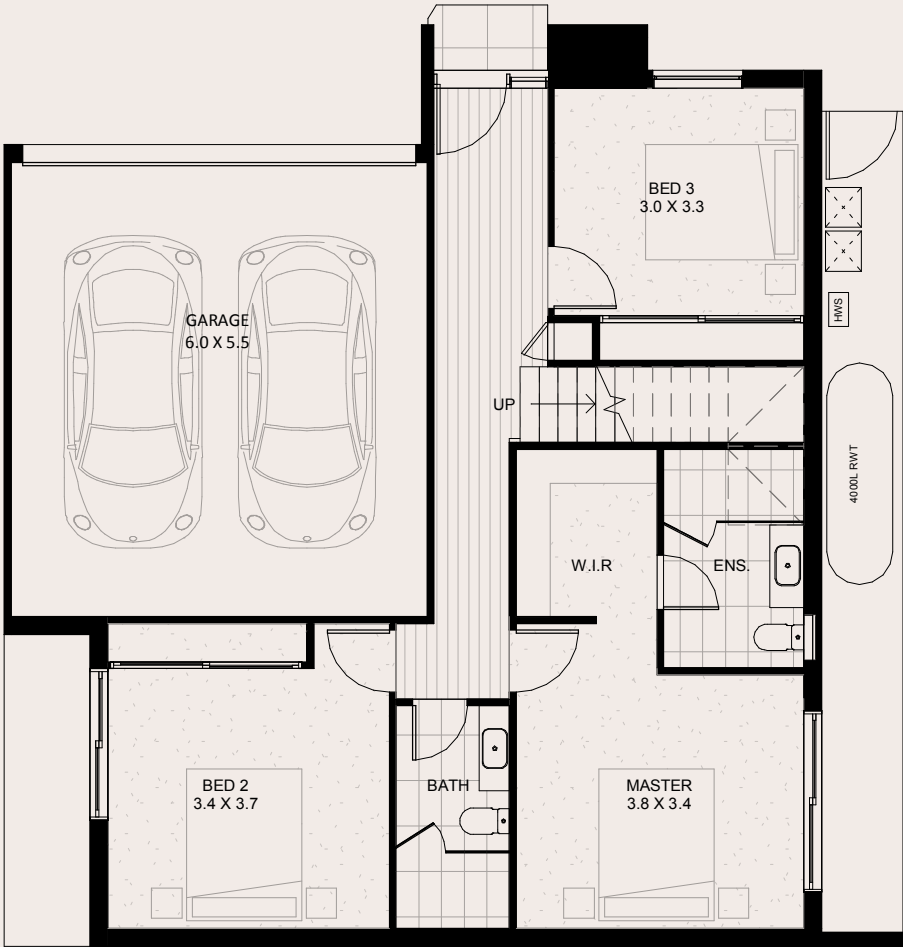
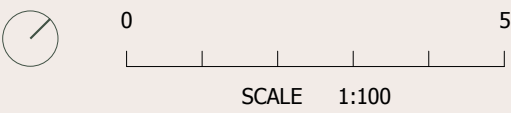
TOWNHOME 3	GROUND FLOOR	FIRST FLOOR	GARAGE	TOTAL AREA	LAND	OPEN SPACE
4 Bed 3 Bath 2 Car	80m²	84m²	35m²	199m²	206m²	77m²



Airdrie Court

Note: All areas shown are approximate. The information contained herein has been obtained from sources we believe to be reliable and therefore have no reason to doubt it's accuracy. The vendor and it's agent will not be responsible for any error or mis-description which may appear. Prospective purchasers or leasees are therefore advised to make whatever investigations they deem necessary.

AIRDRIE COURT

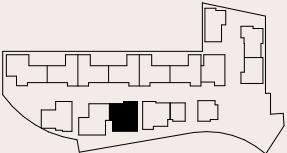


Ground Floor



First Floor

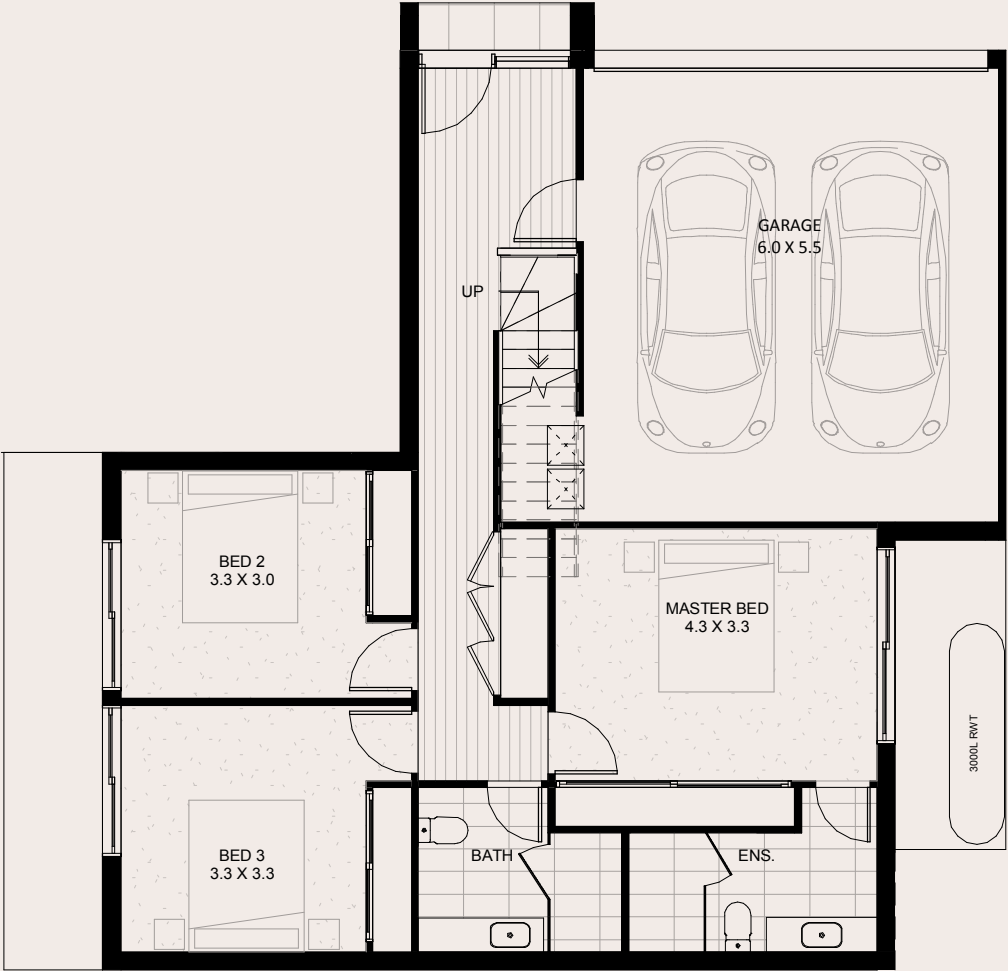
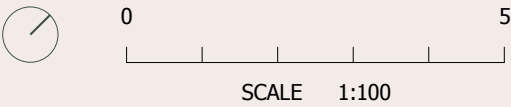
TOWNHOME 3	GROUND FLOOR	FIRST FLOOR	GARAGE	TOTAL AREA	LAND	OPEN SPACE
3 Bed 2.5 Bath 2 Car	80m ²	84m ²	35m ²	199m ²	206m ²	77m ²



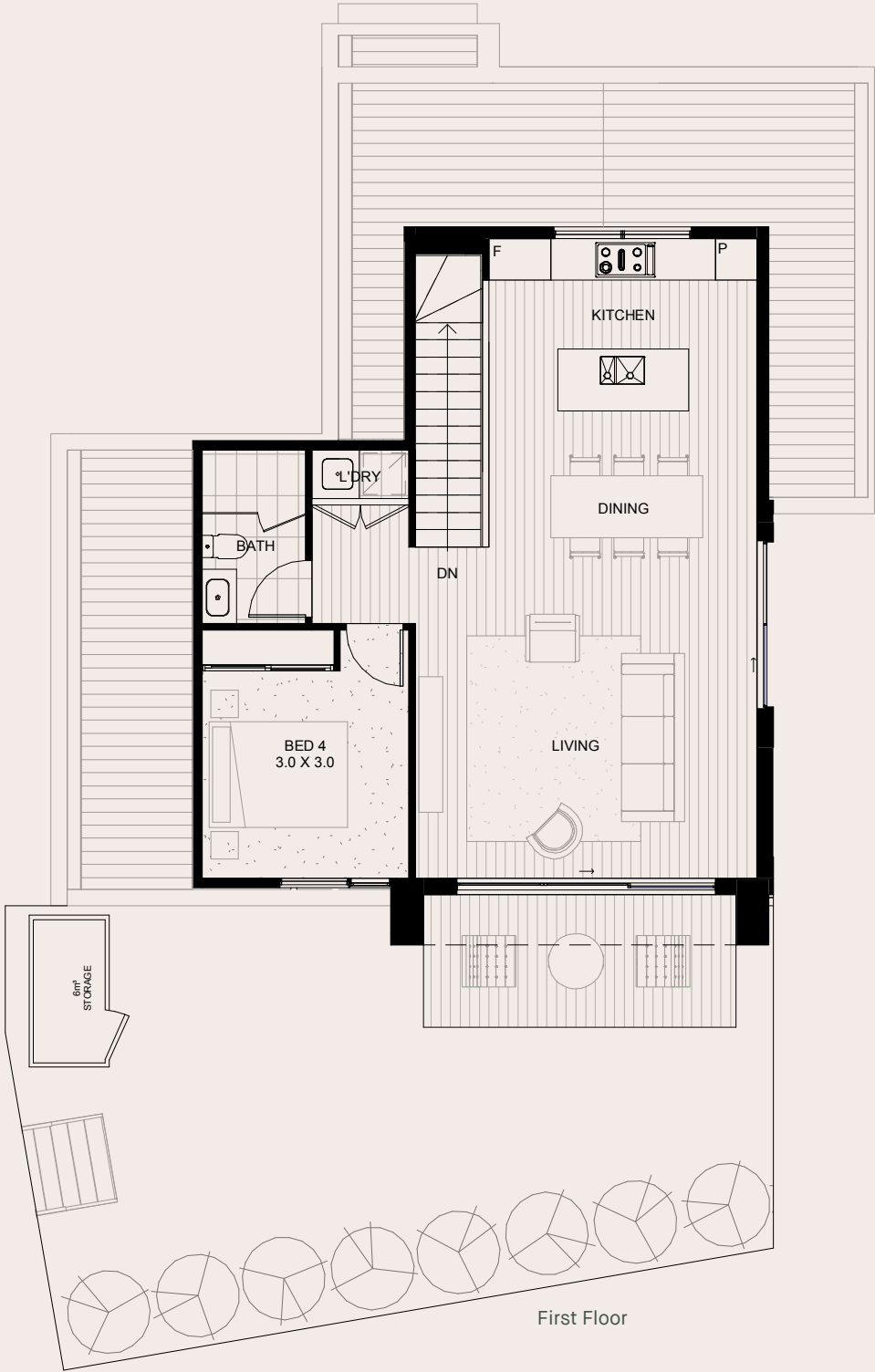
Airdrie Court

Note: All areas shown are approximate. The information contained herein has been obtained from sources we believe to be reliable and therefore have no reason to doubt it's accuracy. The vendor and it's agent will not be responsible for any error or mis-description which may appear. Prospective purchasers or leasees are therefore advised to make whatever investigations they deem necessary.

AIRDRIE COURT



Ground Floor



First Floor

TOWNHOME 4

4 Bed | 3 Bath | 2 Car

GROUND FLOOR

79m²

FIRST FLOOR

71m²

GARAGE

36m²

TOTAL AREA

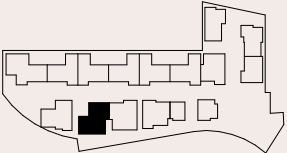
187m²

LAND

197m²

OPEN SPACE

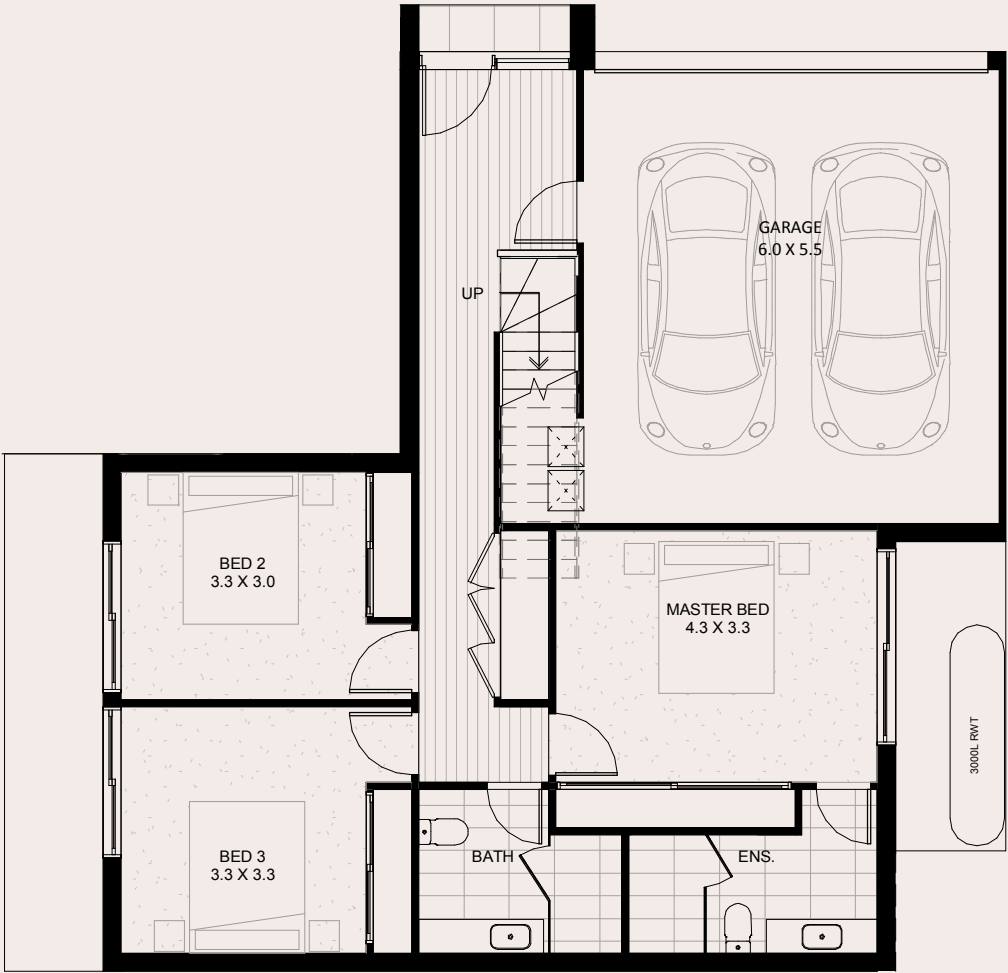
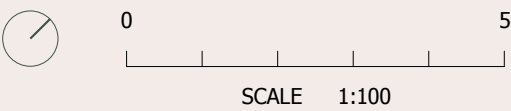
81m²



Airdrie Court

Note: All areas shown are approximate. The information contained herein has been obtained from sources we believe to be reliable and therefore have no reason to doubt it's accuracy. The vendor and it's agent will not be responsible for any error or mis-description which may appear. Prospective purchasers or leasees are therefore advised to make whatever investigations they deem necessary.

AIRDRIE COURT

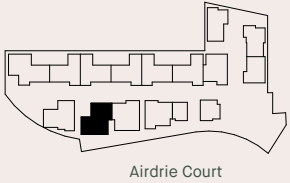


Ground Floor



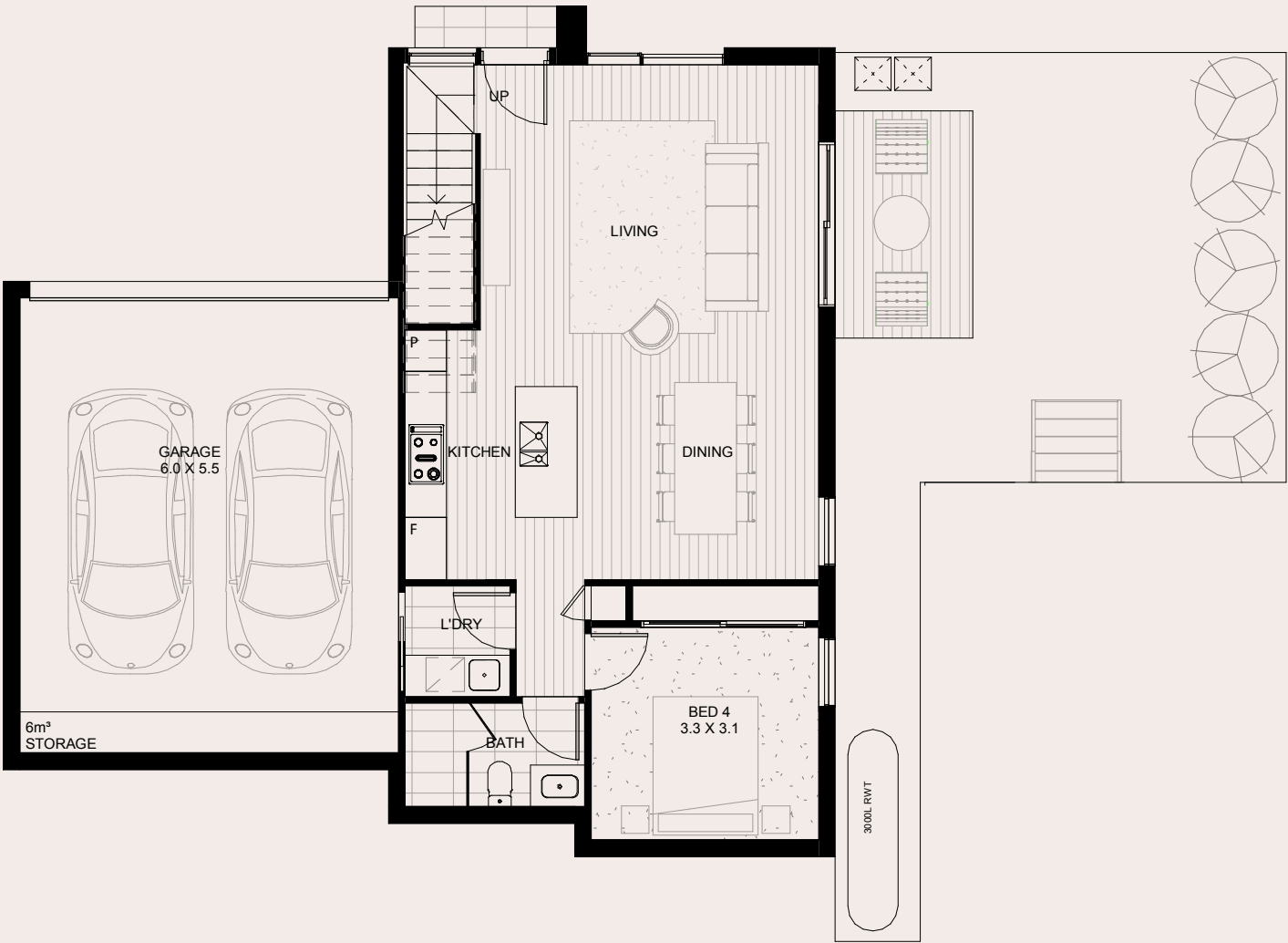
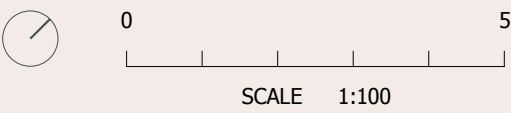
First Floor

TOWNHOME 4	GROUND FLOOR	FIRST FLOOR	GARAGE	TOTAL AREA	LAND	OPEN SPACE
3 Bed 2.5 Bath 2 Car	79m ²	71m ²	36m ²	187m ²	197m ²	81m ²

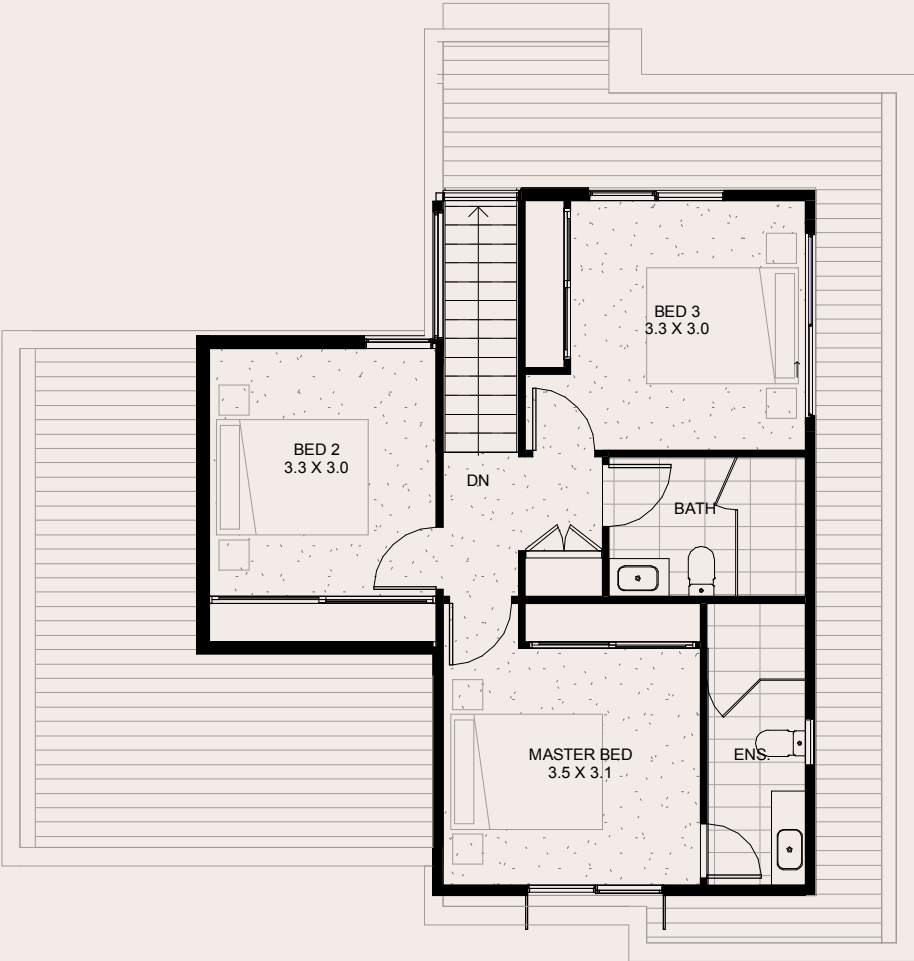


Note: All areas shown are approximate. The information contained herein has been obtained from sources we believe to be reliable and therefore have no reason to doubt it's accuracy. The vendor and it's agent will not be responsible for any error or mis-description which may appear. Prospective purchasers or leasees are therefore advised to make whatever investigations they deem necessary.

AIRDRIE COURT

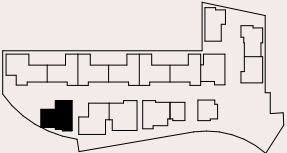


Ground Floor



First Floor

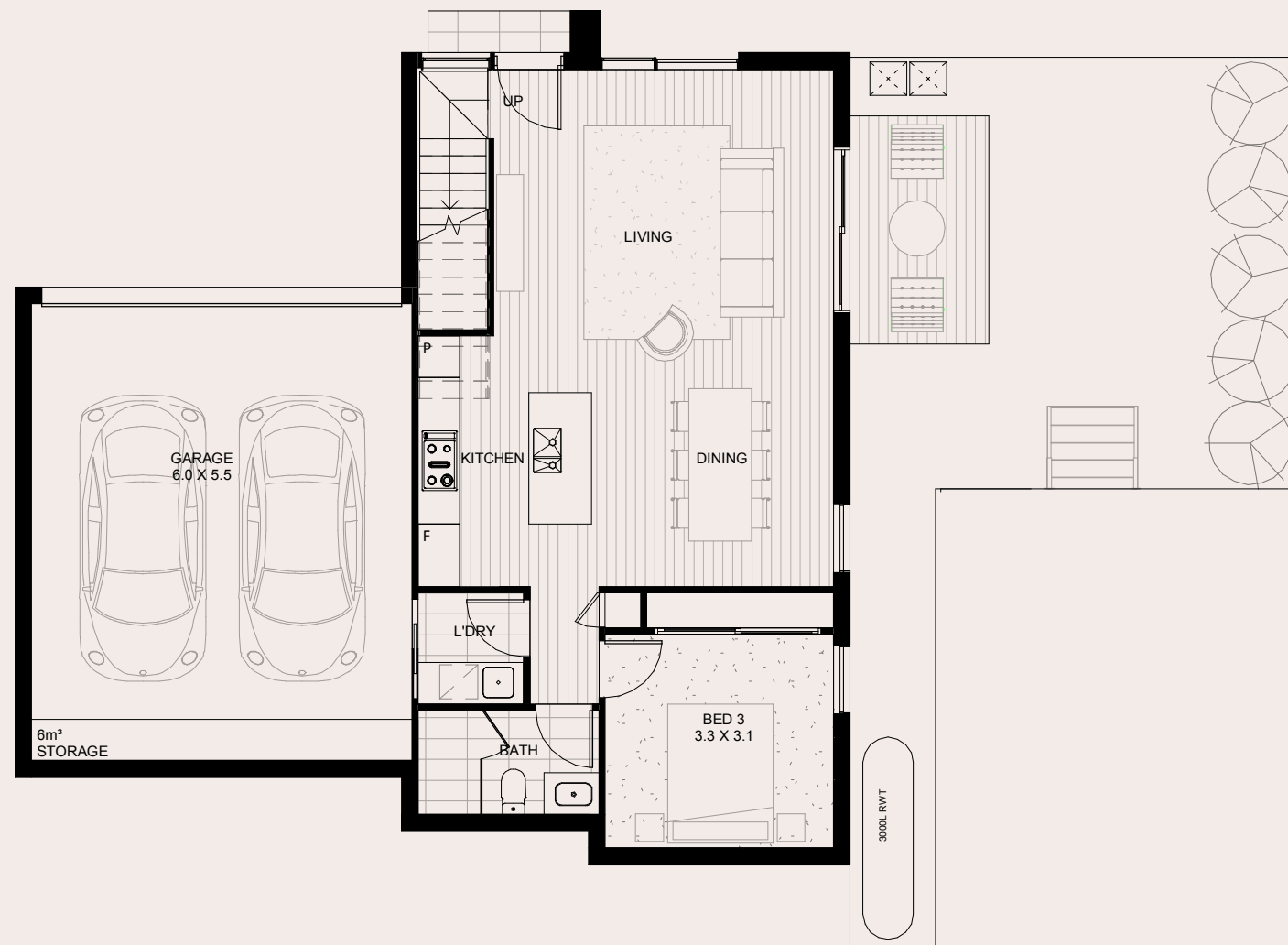
TOWNHOME 5	GROUND FLOOR	FIRST FLOOR	GARAGE	TOTAL AREA	LAND	OPEN SPACE
4 Bed 3 Bath 2 Car	73m²	62m²	41m²	176m²	193m²	50m²



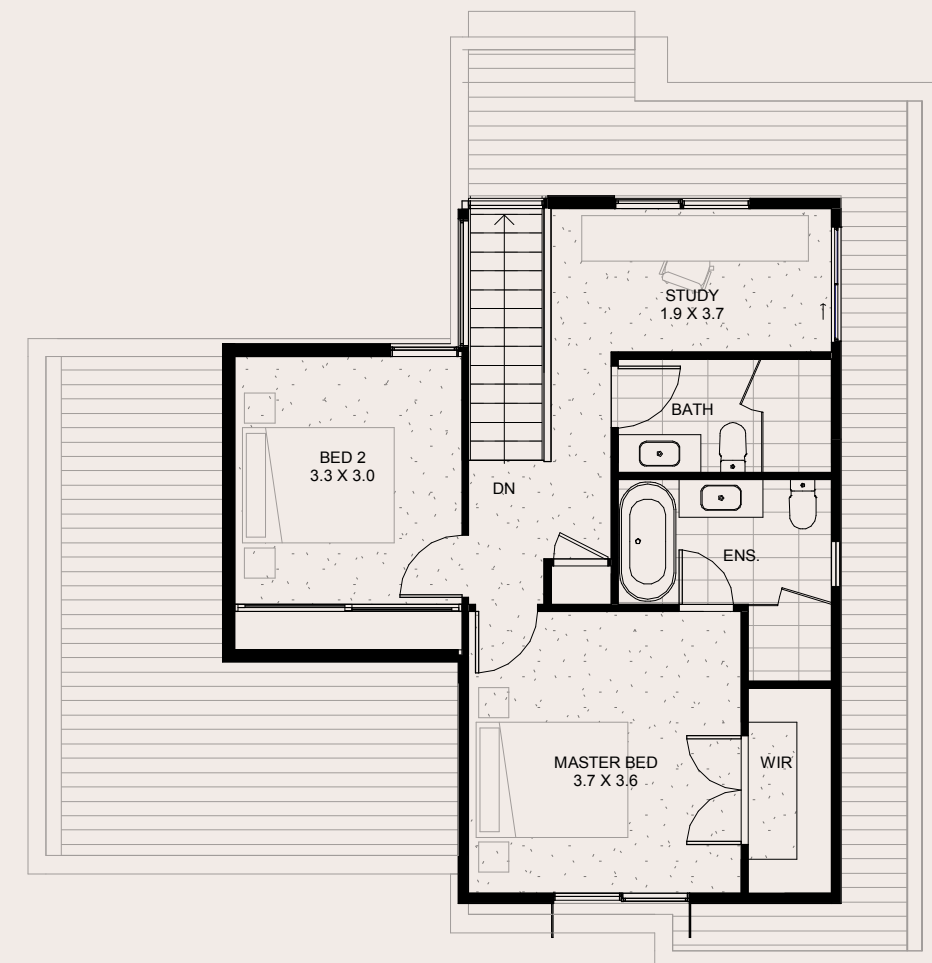
Airdrie Court

Note: All areas shown are approximate. The information contained herein has been obtained from sources we believe to be reliable and therefore have no reason to doubt it's accuracy. The vendor and it's agent will not be responsible for any error or mis-description which may appear. Prospective purchasers or leasees are therefore advised to make whatever investigations they deem necessary.

AIRDRIE
COURT

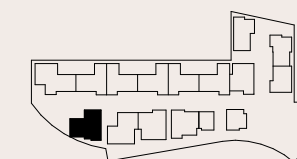


Ground Floor



First Floor

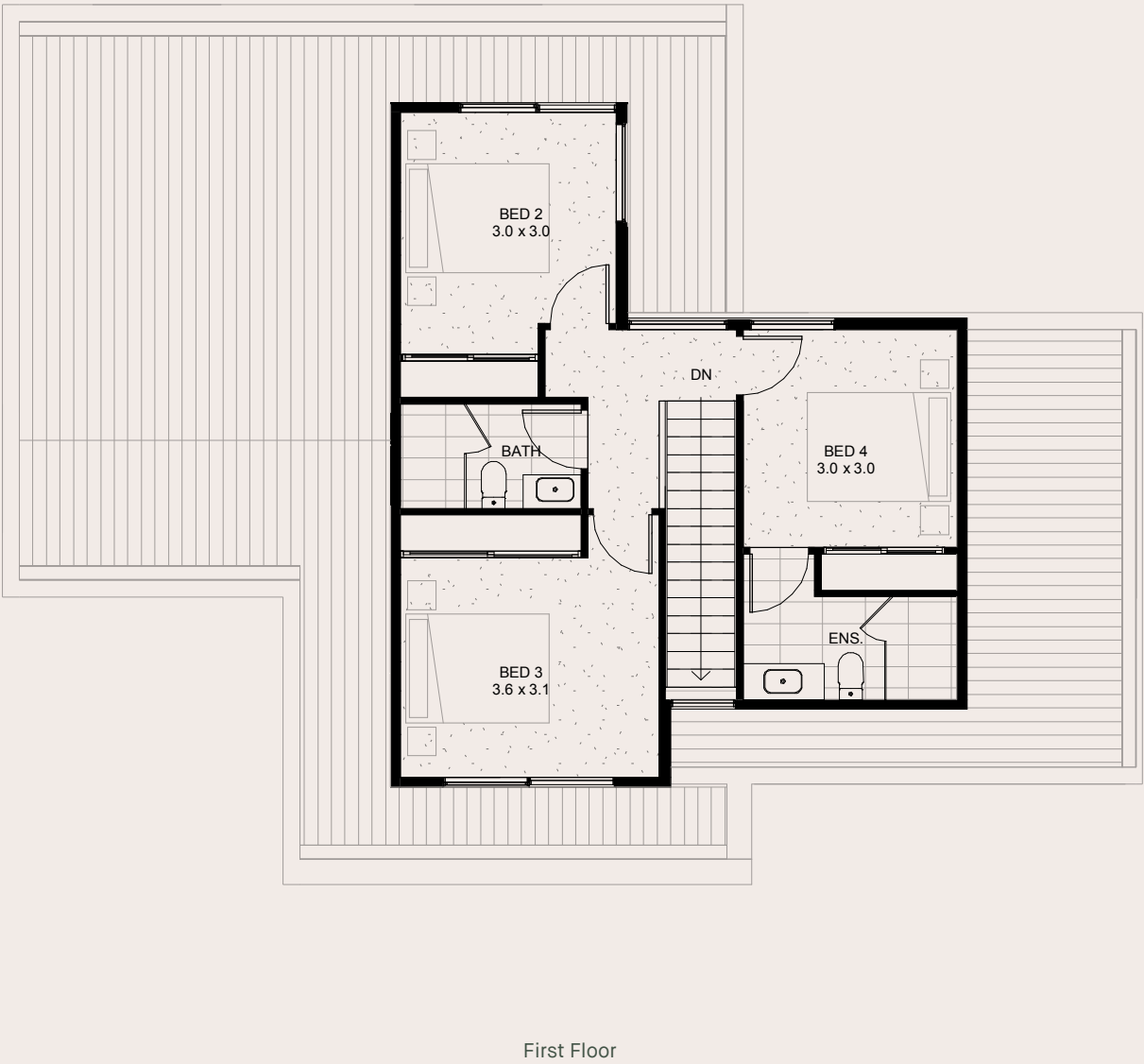
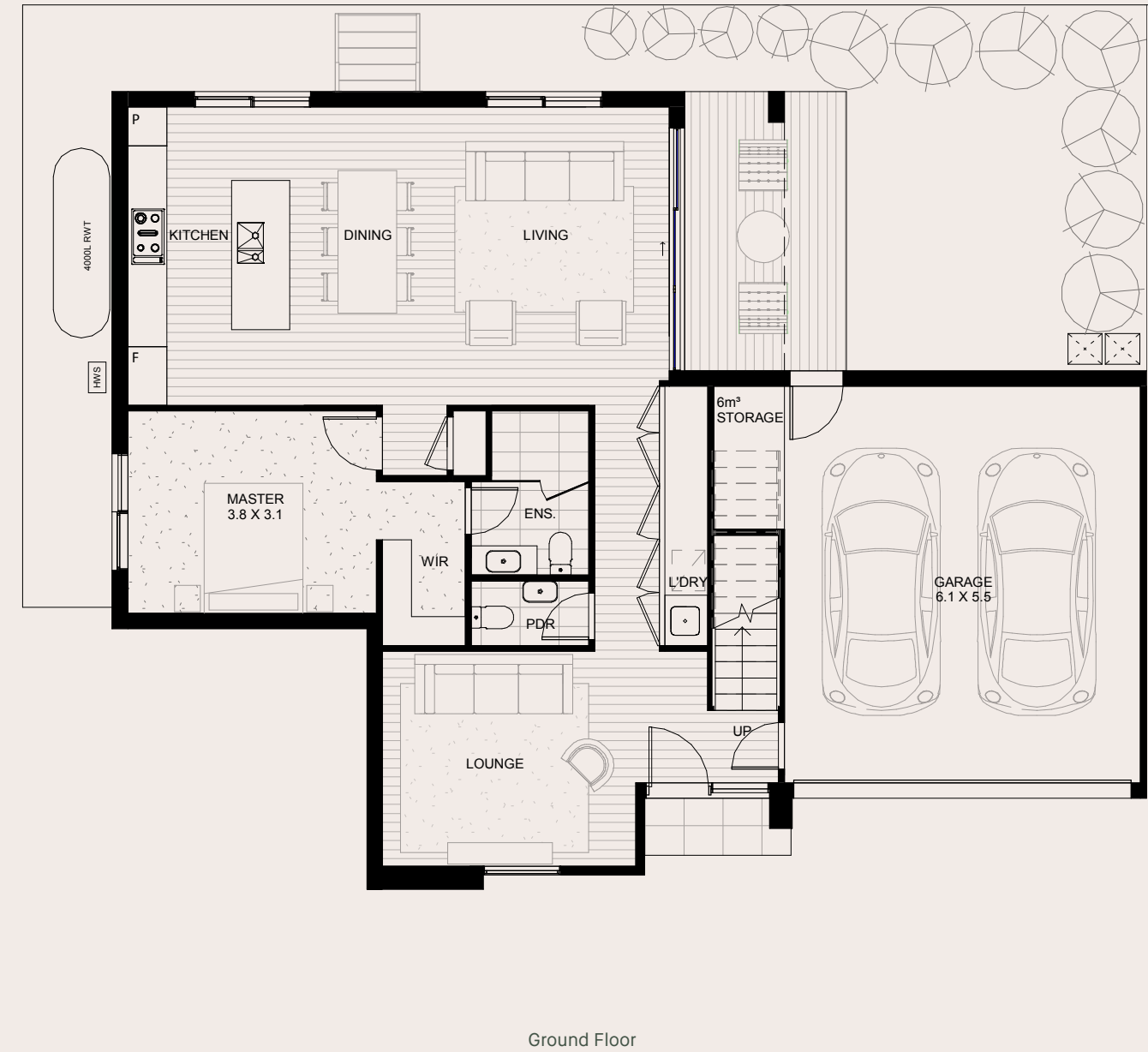
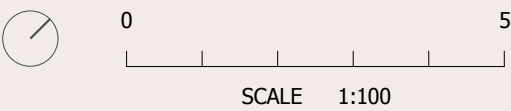
Townhome 5	Ground Floor	First Floor	Garage	Total Area	Land	Open Space
3 Bed 3 Bath 2 Car	73m²	62m²	41m²	176m²	193m²	50m²



Airdrie Court

Note: All areas shown are approximate. The information contained herein has been obtained from sources we believe to be reliable and therefore have no reason to doubt its accuracy. The vendor and its agent will not be responsible for any error or mis-description which may appear. Prospective purchasers or leasees are therefore advised to make whatever investigations they deem necessary.

AIRDRIE COURT



TOWNHOME 6

4 Bed | 3.5 Bath | 2 Car

GROUND FLOOR

99m²

FIRST FLOOR

57m²

GARAGE

40m²

TOTAL AREA

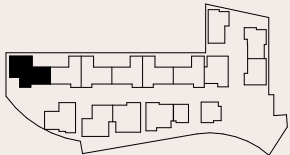
196m²

LAND

209m²

OPEN SPACE

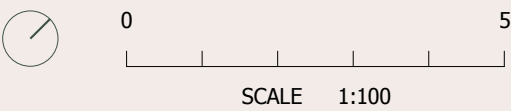
40m²



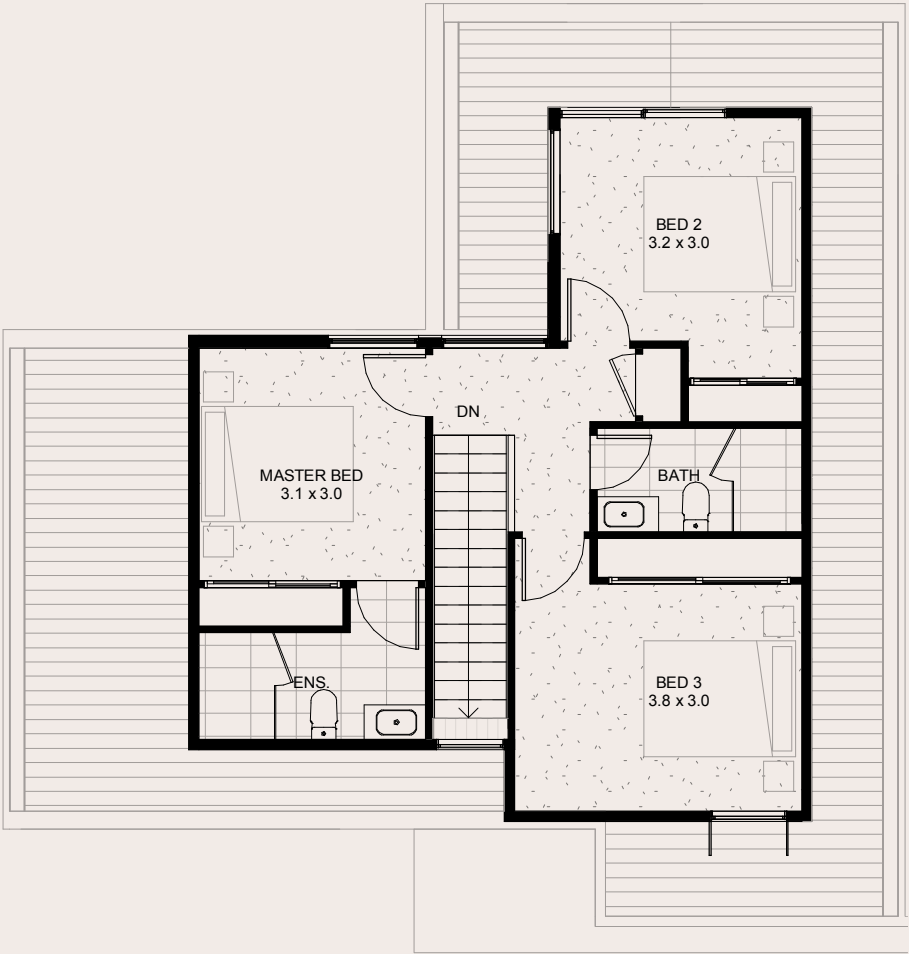
Airdrie Court

Note: All areas shown are approximate. The information contained herein has been obtained from sources we believe to be reliable and therefore have no reason to doubt it's accuracy. The vendor and it's agent will not be responsible for any error or mis-description which may appear. Prospective purchasers or leasees are therefore advised to make whatever investigations they deem necessary.

AIRDRIE COURT

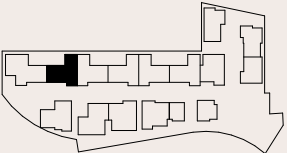


Ground Floor



First Floor

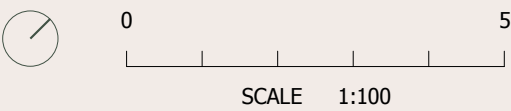
TOWNHOME 7	GROUND FLOOR	FIRST FLOOR	GARAGE	TOTAL AREA	LAND	OPEN SPACE
4 Bed 3 Bath 2 Car	66m²	59m²	38m²	164m²	157m²	47m²



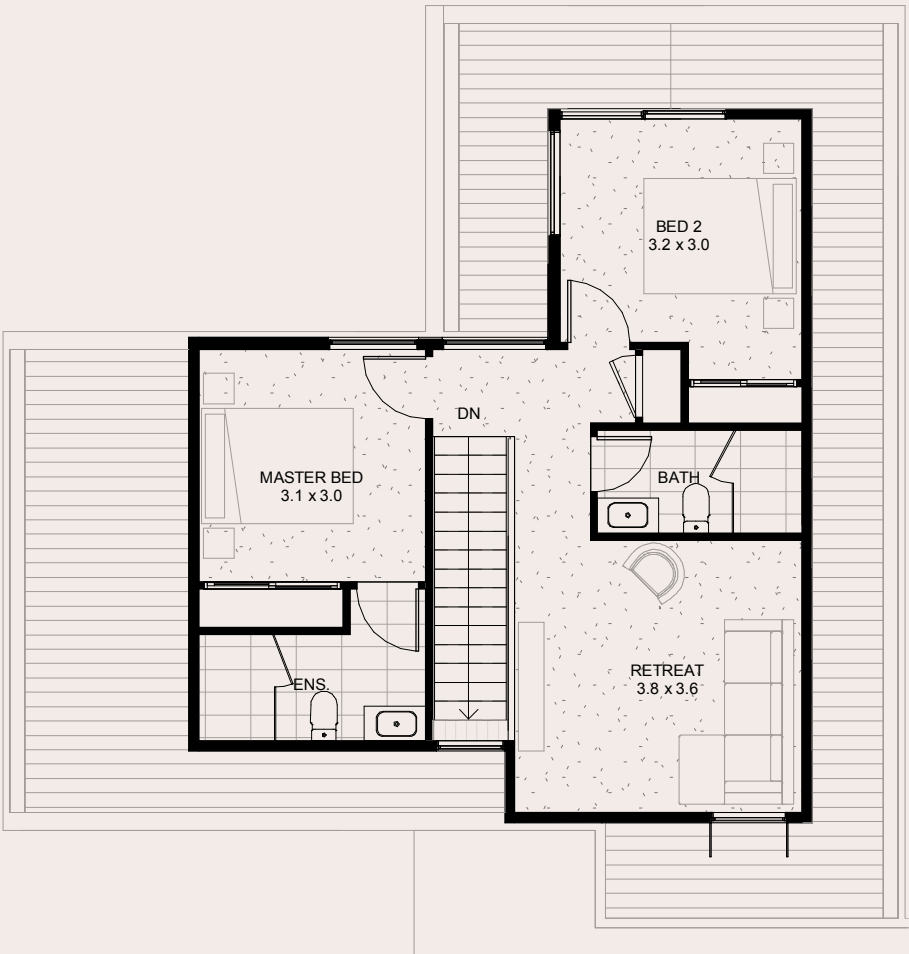
Airdrie Court

Note: All areas shown are approximate. The information contained herein has been obtained from sources we believe to be reliable and therefore have no reason to doubt it's accuracy. The vendor and it's agent will not be responsible for any error or mis-description which may appear. Prospective purchasers or leasees are therefore advised to make whatever investigations they deem necessary.

AIRDRIE COURT

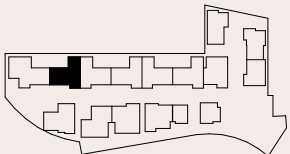


Ground Floor



First Floor

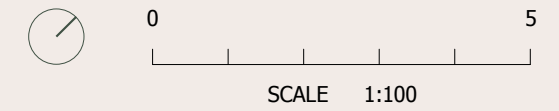
TOWNHOME 7	GROUND FLOOR	FIRST FLOOR	GARAGE	TOTAL AREA	LAND	OPEN SPACE
3 Bed 3 Bath 2 Car	66m²	59m²	38m²	164m²	157m²	47m²



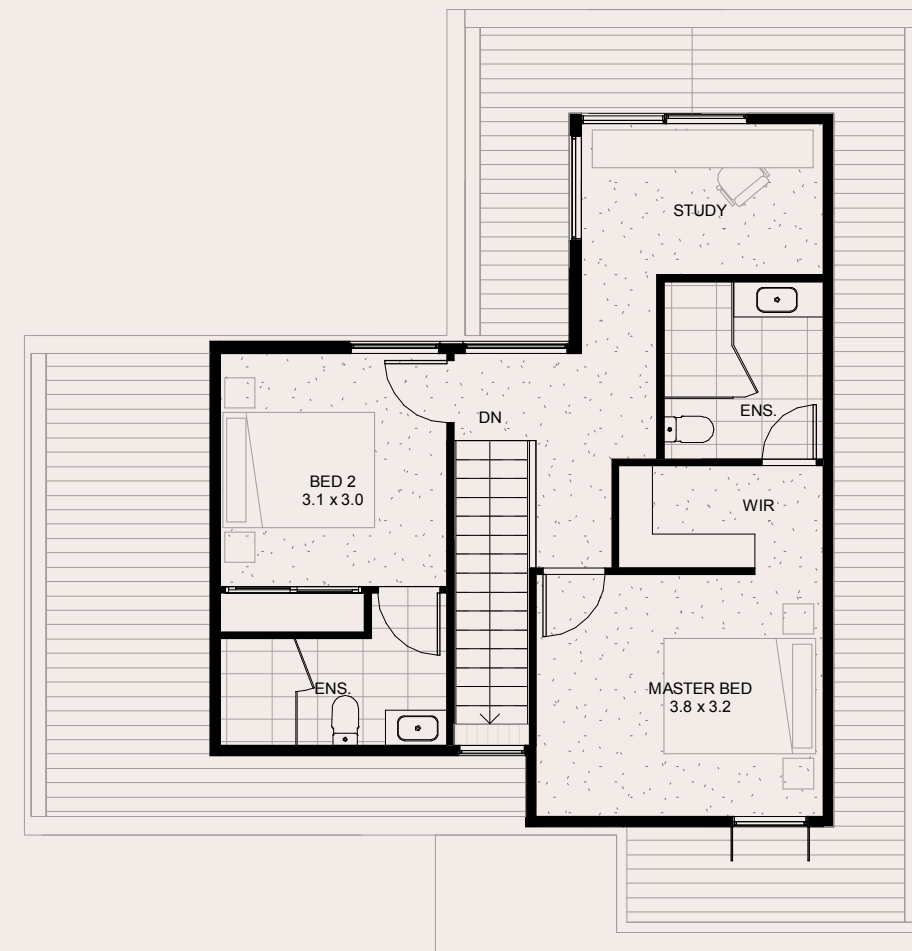
Airdrie Court

Note: All areas shown are approximate. The information contained herein has been obtained from sources we believe to be reliable and therefore have no reason to doubt it's accuracy. The vendor and it's agent will not be responsible for any error or mis-description which may appear. Prospective purchasers or leasees are therefore advised to make whatever investigations they deem necessary.

AIRDRIE
COURT

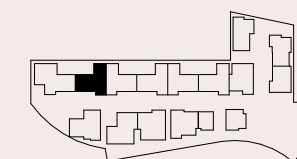


Ground Floor



First Floor

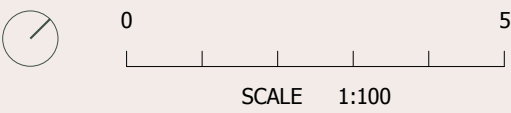
Townhome 7	Ground Floor	First Floor	Garage	Total Area	Land	Open Space
3 Bed 3 Bath 2 Car	66m²	59m²	38m²	164m²	157m²	47m²



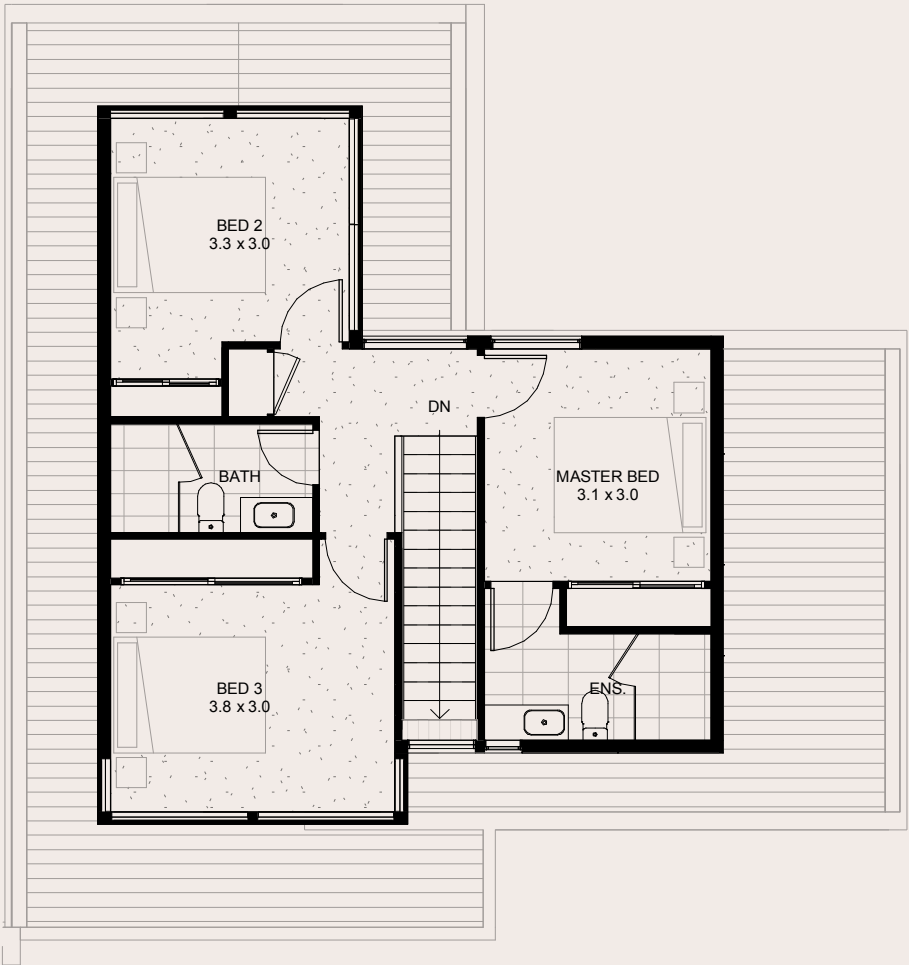
Airdrie Court

Note: All areas shown are approximate. The information contained herein has been obtained from sources we believe to be reliable and therefore have no reason to doubt it's accuracy. The vendor and it's agent will not be responsible for any error or mis-description which may appear. Prospective purchasers or leasees are therefore advised to make whatever investigations they deem necessary.

AIRDRIE COURT



Ground Floor



First Floor

TOWNHOME 8

4 Bed | 3 Bath | 2 Car

GROUND FLOOR

66m²

FIRST FLOOR

59m²

GARAGE

39m²

TOTAL AREA

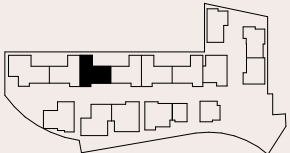
164m²

LAND

157m²

OPEN SPACE

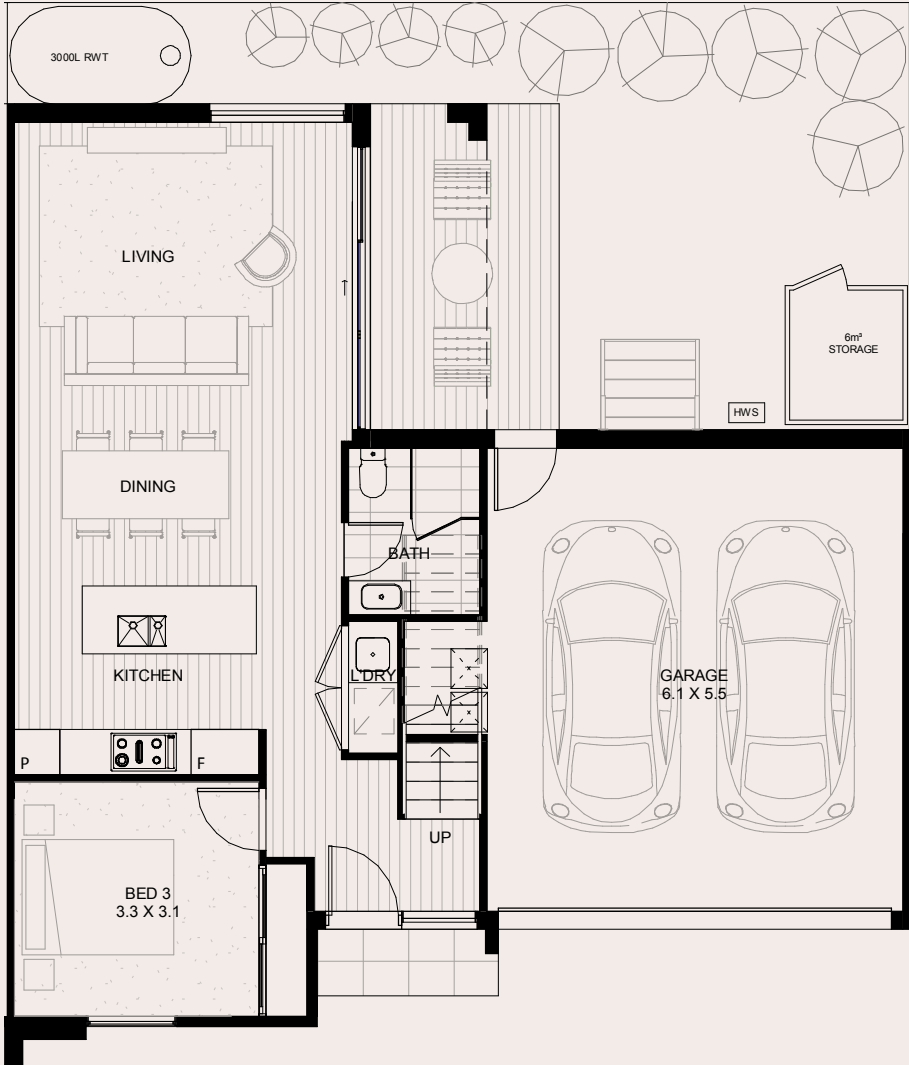
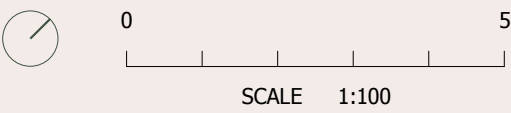
47m²



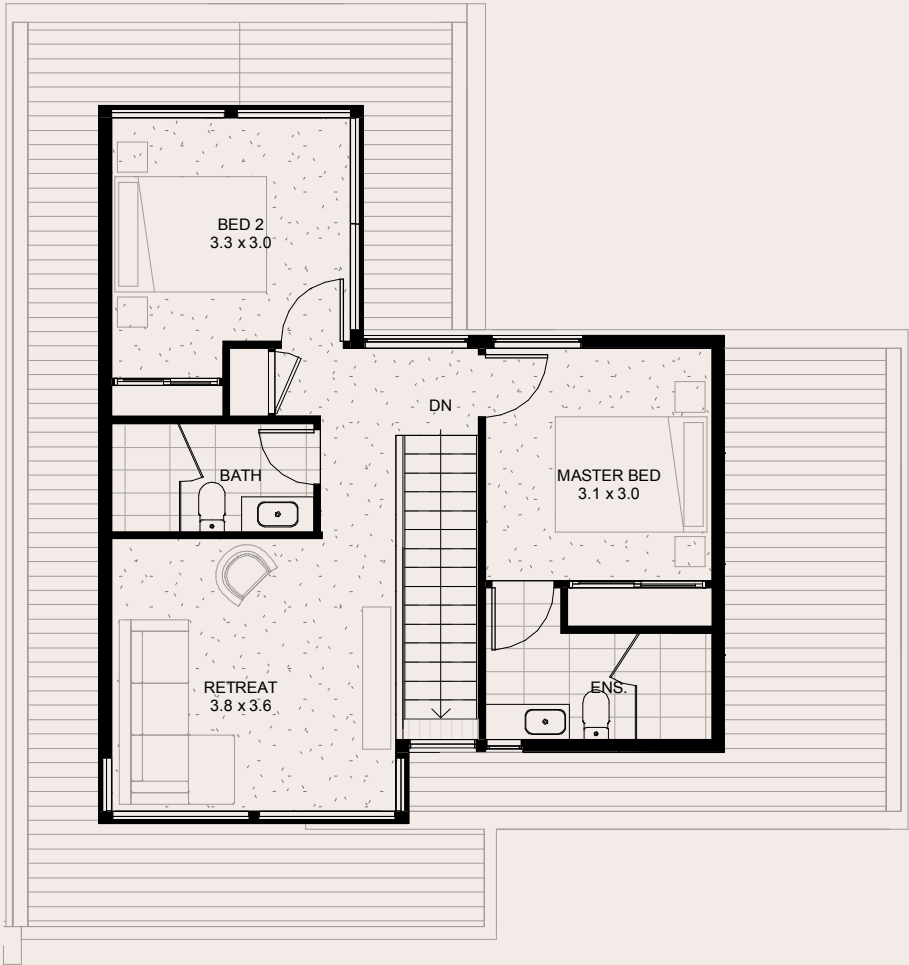
Airdrie Court

Note: All areas shown are approximate. The information contained herein has been obtained from sources we believe to be reliable and therefore have no reason to doubt it's accuracy. The vendor and it's agent will not be responsible for any error or mis-description which may appear. Prospective purchasers or leasees are therefore advised to make whatever investigations they deem necessary.

AIRDRIE COURT

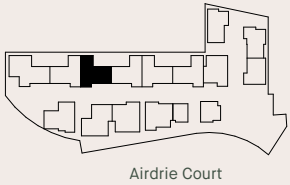


Ground Floor



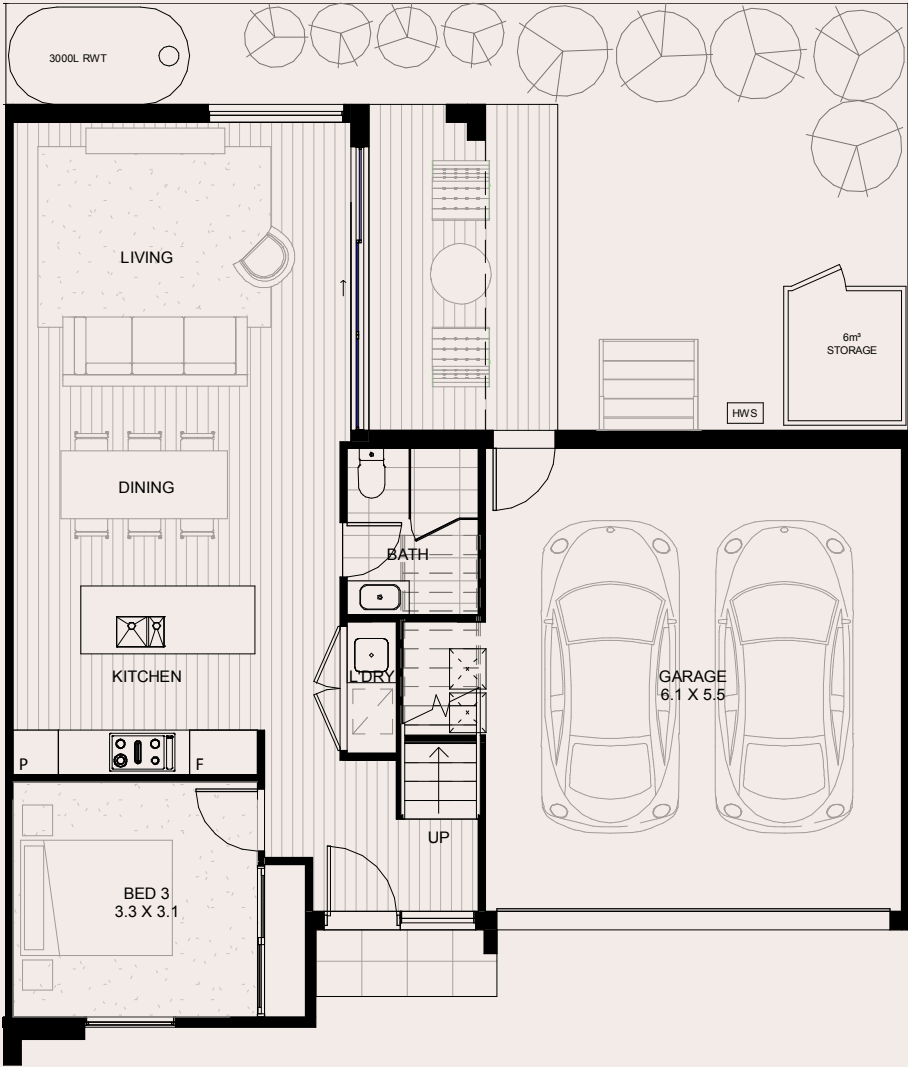
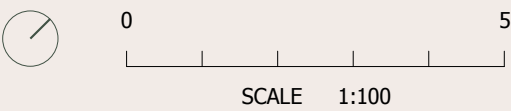
First Floor

TOWNHOME 8	GROUND FLOOR	FIRST FLOOR	GARAGE	TOTAL AREA	LAND	OPEN SPACE
3 Bed 3 Bath 2 Car	66m ²	59m ²	39m ²	164m ²	157m ²	47m ²

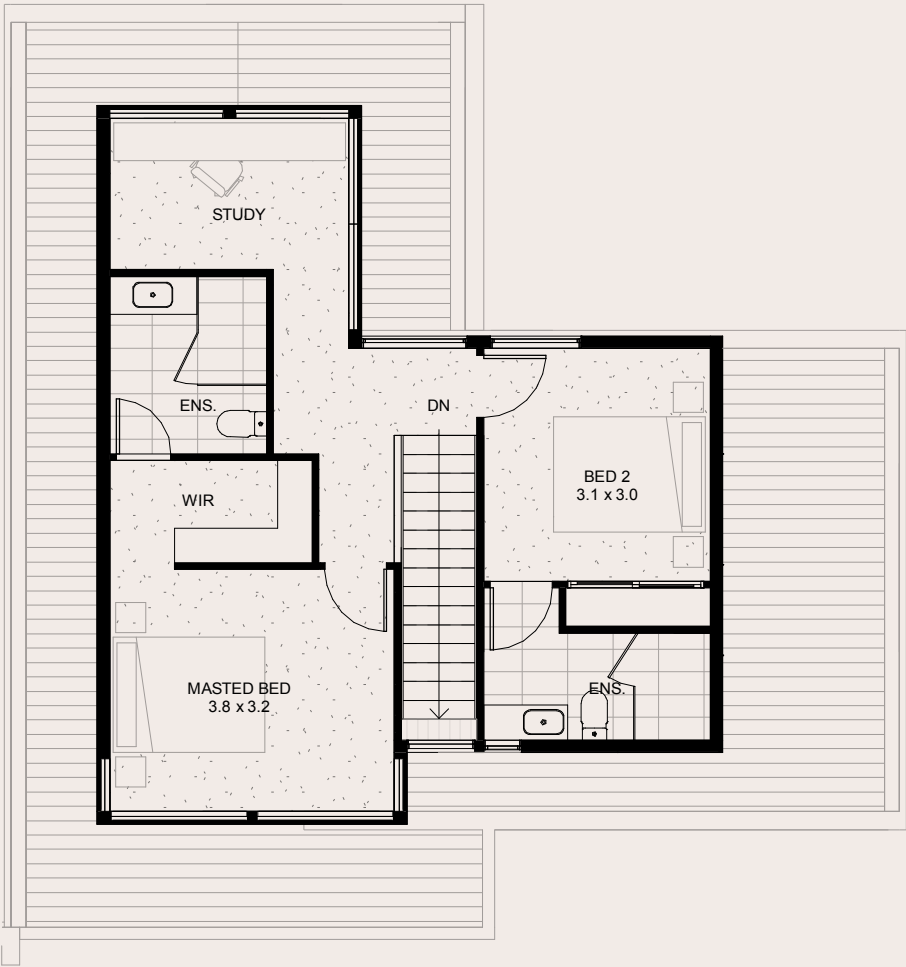


Note: All areas shown are approximate. The information contained herein has been obtained from sources we believe to be reliable and therefore have no reason to doubt it's accuracy. The vendor and it's agent will not be responsible for any error or mis-description which may appear. Prospective purchasers or leasees are therefore advised to make whatever investigations they deem necessary.

AIRDRIE COURT

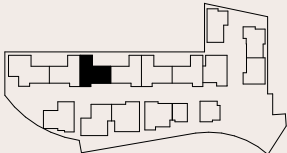


Ground Floor



First Floor

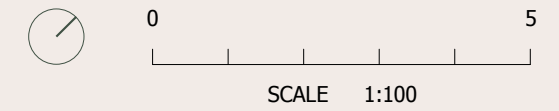
TOWNHOME 8	GROUND FLOOR	FIRST FLOOR	GARAGE	TOTAL AREA	LAND	OPEN SPACE
3 Bed 3 Bath 2 Car	66m ²	59m ²	39m ²	164m ²	157m ²	47m ²



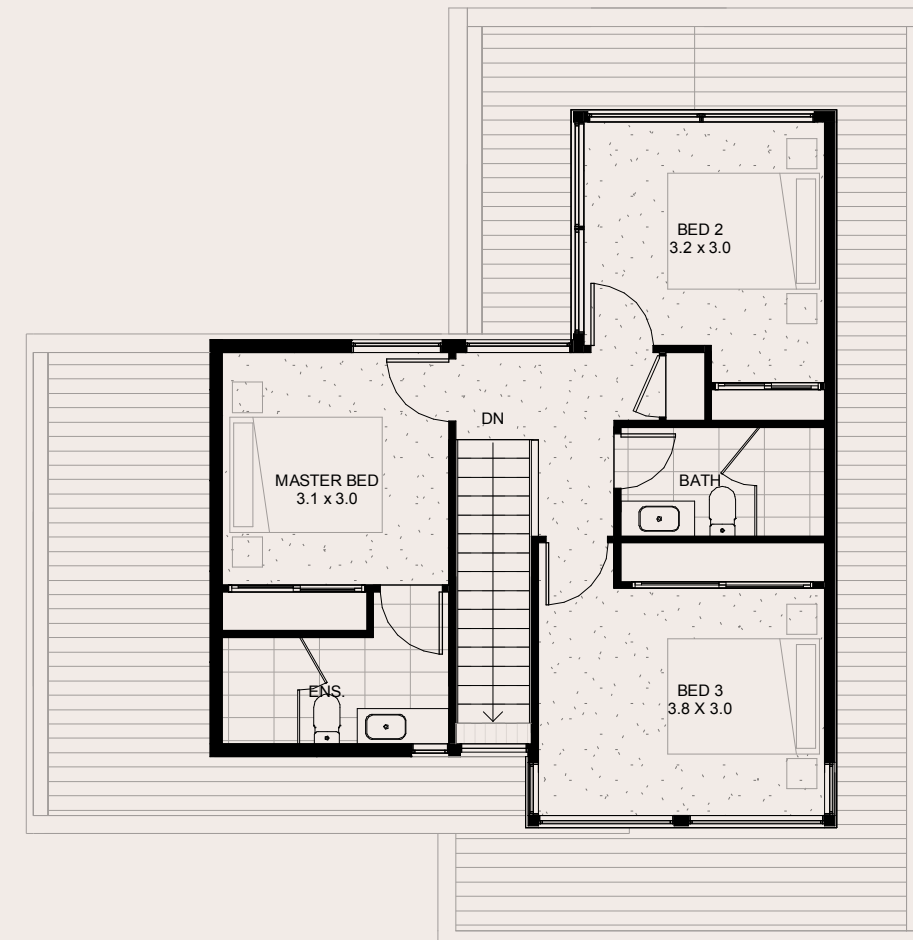
Airdrie Court

Note: All areas shown are approximate. The information contained herein has been obtained from sources we believe to be reliable and therefore have no reason to doubt it's accuracy. The vendor and it's agent will not be responsible for any error or mis-description which may appear. Prospective purchasers or leasees are therefore advised to make whatever investigations they deem necessary.

AIRDRIE
COURT

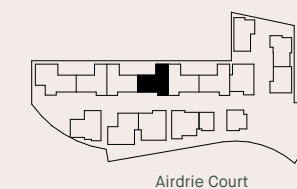


Ground Floor



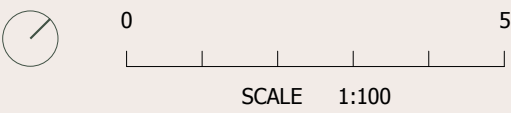
First Floor

Townhome 9	Ground Floor	First Floor	Garage	Total Area	Land	Open Space
4 Bed 3 Bath 2 Car	66m²	59m²	39m²	164m²	157m²	47m²

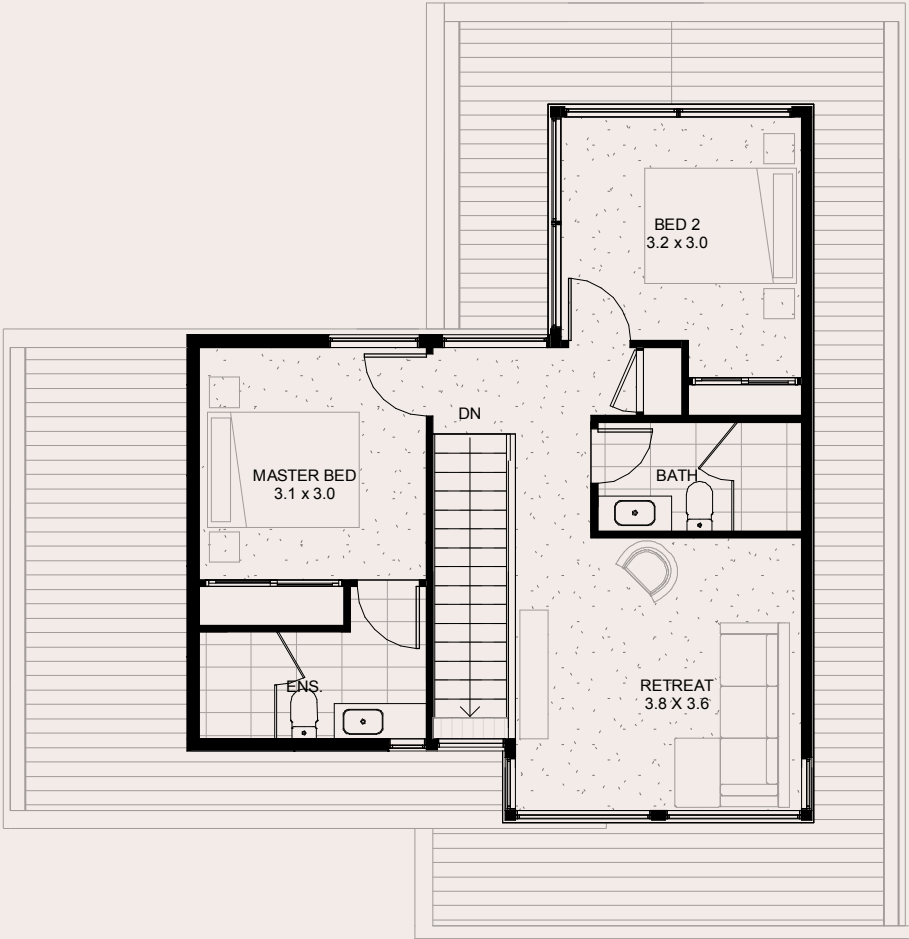


Note: All areas shown are approximate. The information contained herein has been obtained from sources we believe to be reliable and therefore have no reason to doubt it's accuracy. The vendor and it's agent will not be responsible for any error or mis-description which may appear. Prospective purchasers or leasees are therefore advised to make whatever investigations they deem necessary.

AIRDRIE COURT

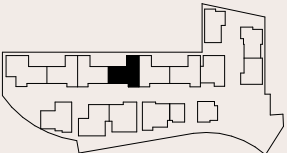


Ground Floor



First Floor

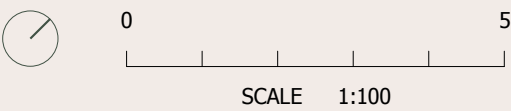
TOWNHOME 9	GROUND FLOOR	FIRST FLOOR	GARAGE	TOTAL AREA	LAND	OPEN SPACE
3 Bed 3 Bath 2 Car	66m ²	59m ²	39m ²	164m ²	157m ²	47m ²



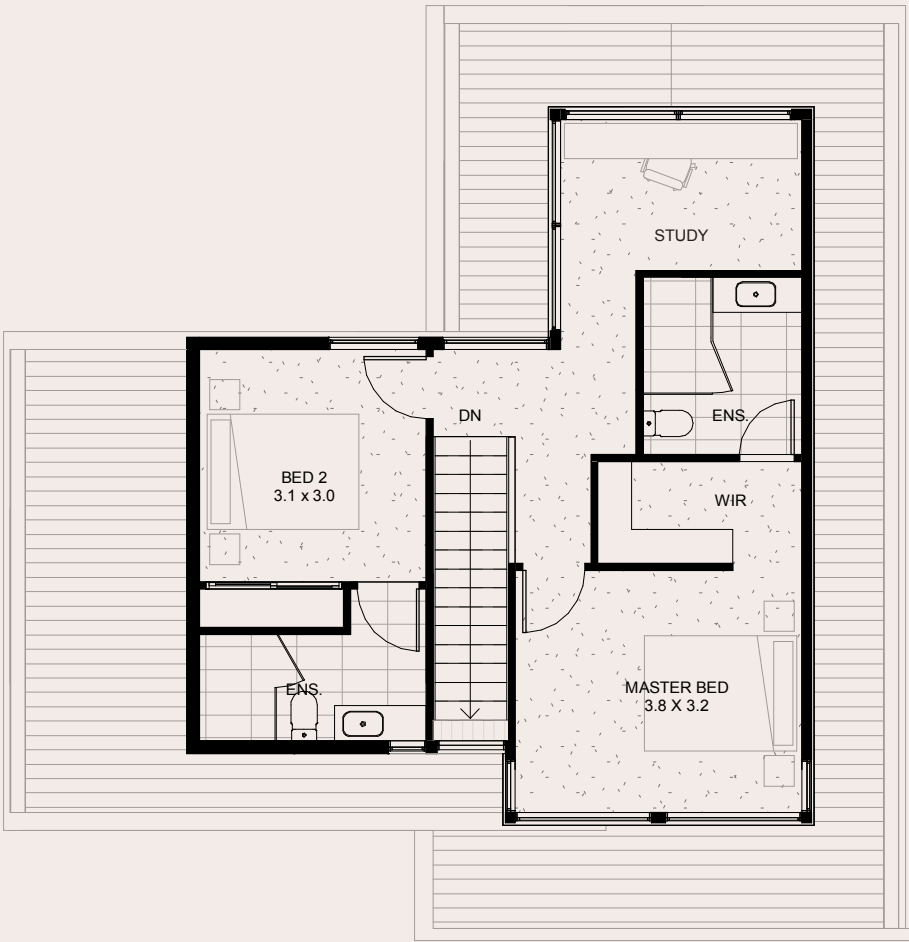
Airdrie Court

Note: All areas shown are approximate. The information contained herein has been obtained from sources we believe to be reliable and therefore have no reason to doubt it's accuracy. The vendor and it's agent will not be responsible for any error or mis-description which may appear. Prospective purchasers or leasees are therefore advised to make whatever investigations they deem necessary.

AIRDRIE COURT

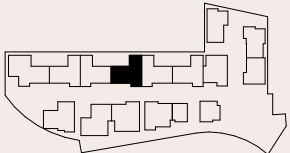


Ground Floor



First Floor

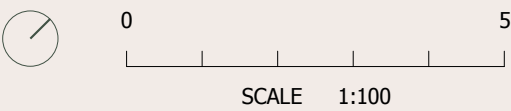
TOWNHOME 9	GROUND FLOOR	FIRST FLOOR	GARAGE	TOTAL AREA	LAND	OPEN SPACE
3 Bed 3 Bath 2 Car	66m ²	59m ²	39m ²	164m ²	157m ²	47m ²



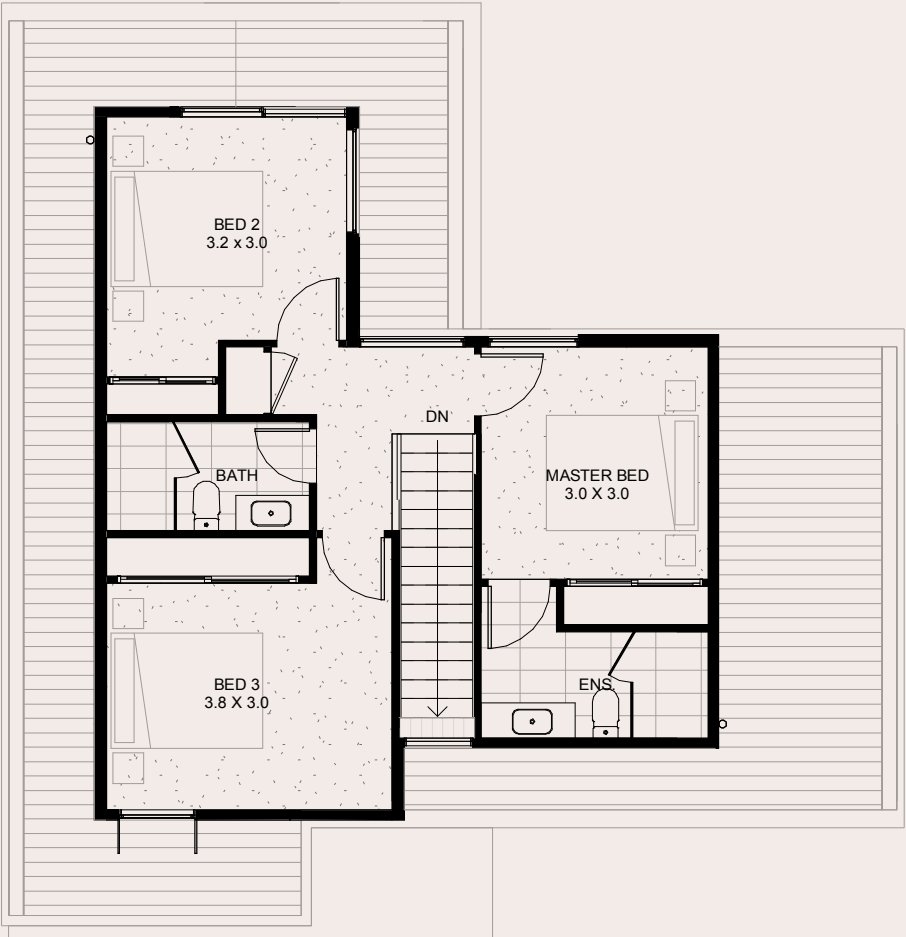
Airdrie Court

Note: All areas shown are approximate. The information contained herein has been obtained from sources we believe to be reliable and therefore have no reason to doubt it's accuracy. The vendor and it's agent will not be responsible for any error or mis-description which may appear. Prospective purchasers or leasees are therefore advised to make whatever investigations they deem necessary.

AIRDRIE COURT

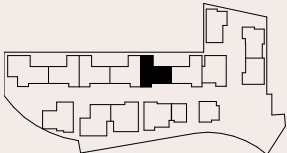


Ground Floor



First Floor

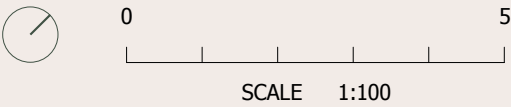
TOWNHOME 10	GROUND FLOOR	FIRST FLOOR	GARAGE	TOTAL AREA	LAND	OPEN SPACE
4 Bed 3 Bath 2 Car	66m ²	59m ²	39m ²	164m ²	157m ²	47m ²



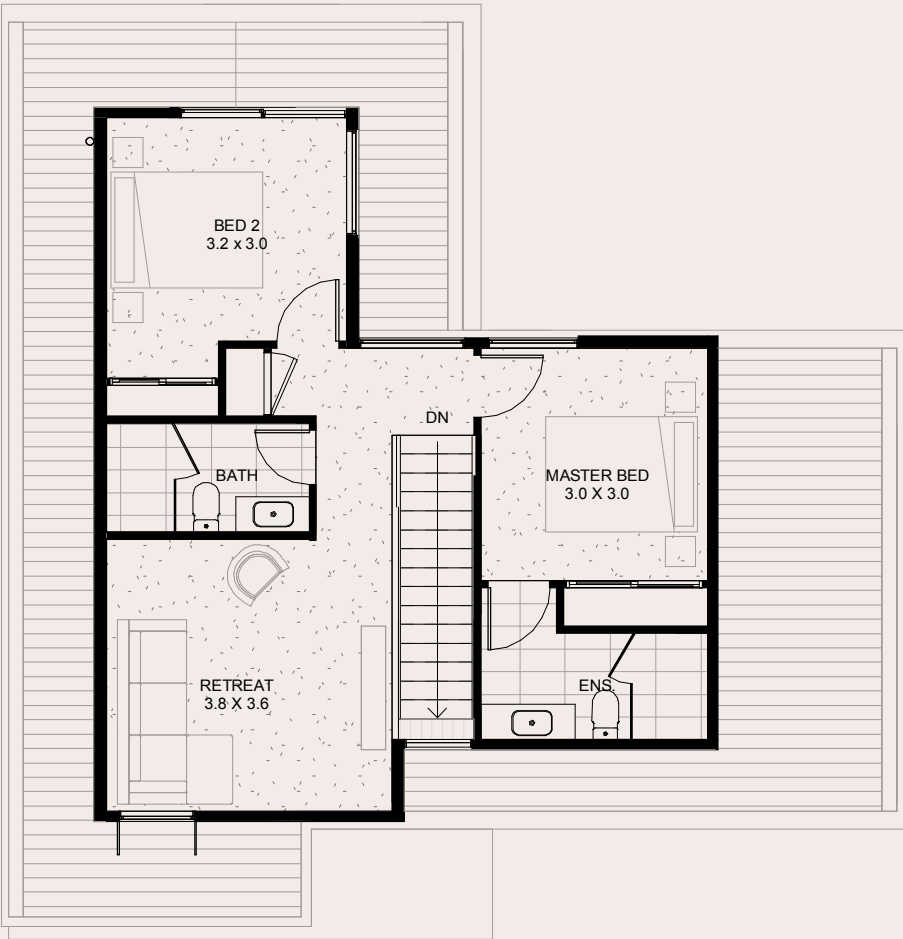
Airdrie Court

Note: All areas shown are approximate. The information contained herein has been obtained from sources we believe to be reliable and therefore have no reason to doubt it's accuracy. The vendor and it's agent will not be responsible for any error or mis-description which may appear. Prospective purchasers or leasees are therefore advised to make whatever investigations they deem necessary.

AIRDRIE COURT

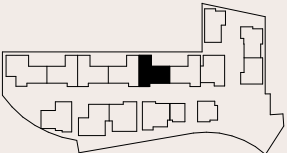


Ground Floor



First Floor

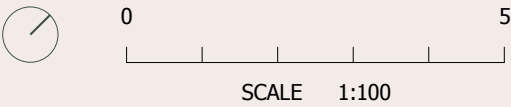
TOWNHOME 10	GROUND FLOOR	FIRST FLOOR	GARAGE	TOTAL AREA	LAND	OPEN SPACE
3 Bed 3 Bath 2 Car	66m ²	59m ²	39m ²	164m ²	157m ²	47m ²



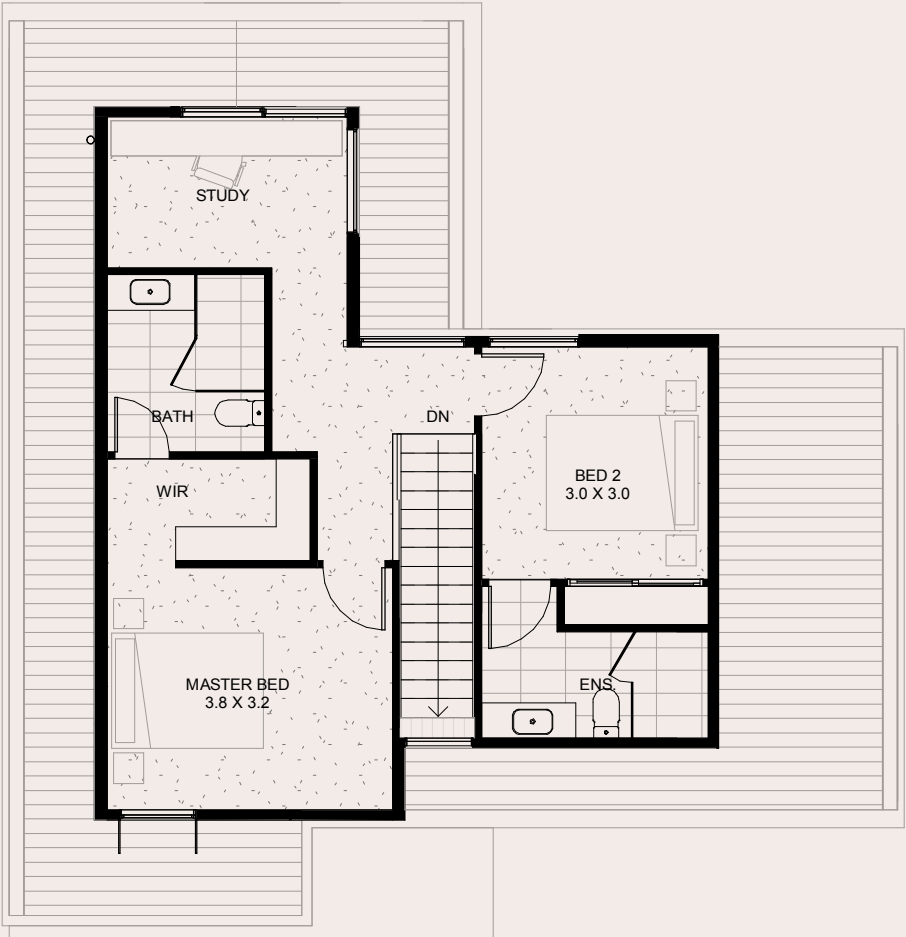
Airdrie Court

Note: All areas shown are approximate. The information contained herein has been obtained from sources we believe to be reliable and therefore have no reason to doubt it's accuracy. The vendor and it's agent will not be responsible for any error or mis-description which may appear. Prospective purchasers or leasees are therefore advised to make whatever investigations they deem necessary.

AIRDRIE COURT

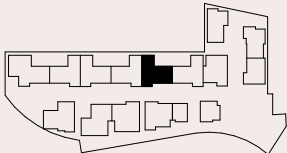


Ground Floor



First Floor

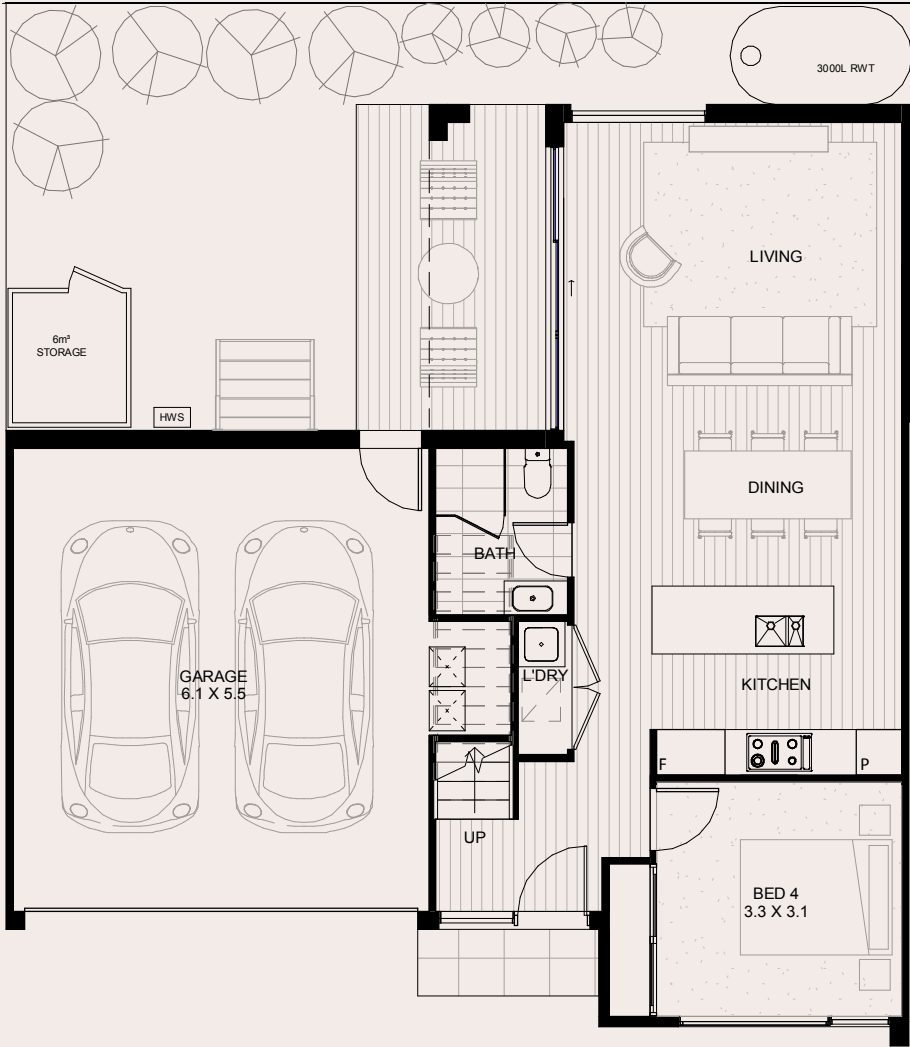
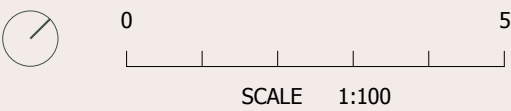
TOWNHOME 10	GROUND FLOOR	FIRST FLOOR	GARAGE	TOTAL AREA	LAND	OPEN SPACE
3 Bed 3 Bath 2 Car	66m ²	59m ²	39m ²	164m ²	157m ²	47m ²



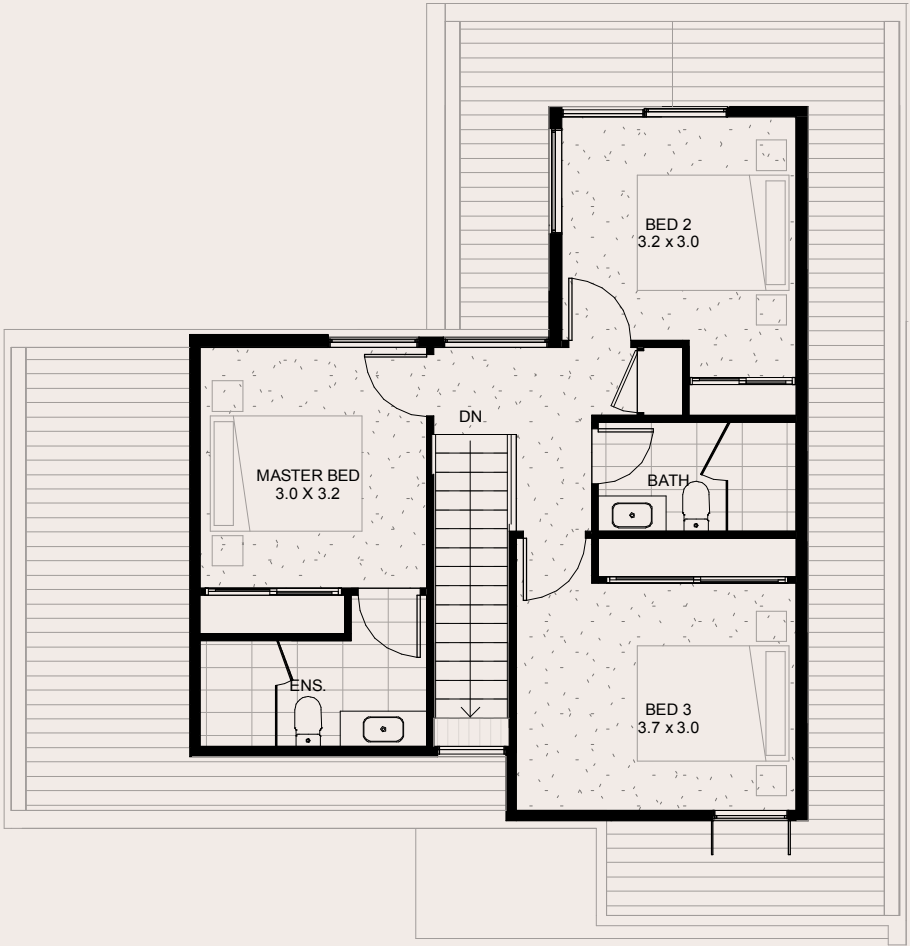
Airdrie Court

Note: All areas shown are approximate. The information contained herein has been obtained from sources we believe to be reliable and therefore have no reason to doubt it's accuracy. The vendor and it's agent will not be responsible for any error or mis-description which may appear. Prospective purchasers or leasees are therefore advised to make whatever investigations they deem necessary.

AIRDRIE COURT

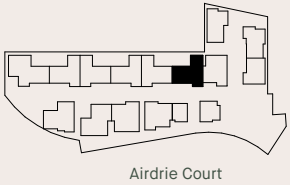


Ground Floor



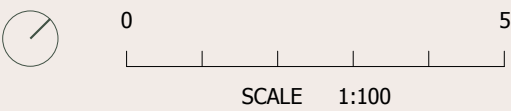
First Floor

TOWNHOME 11	GROUND FLOOR	FIRST FLOOR	GARAGE	TOTAL AREA	LAND	OPEN SPACE
4 Bed 3 Bath 2 Car	66m ²	59m ²	39m ²	164m ²	157m ²	47m ²

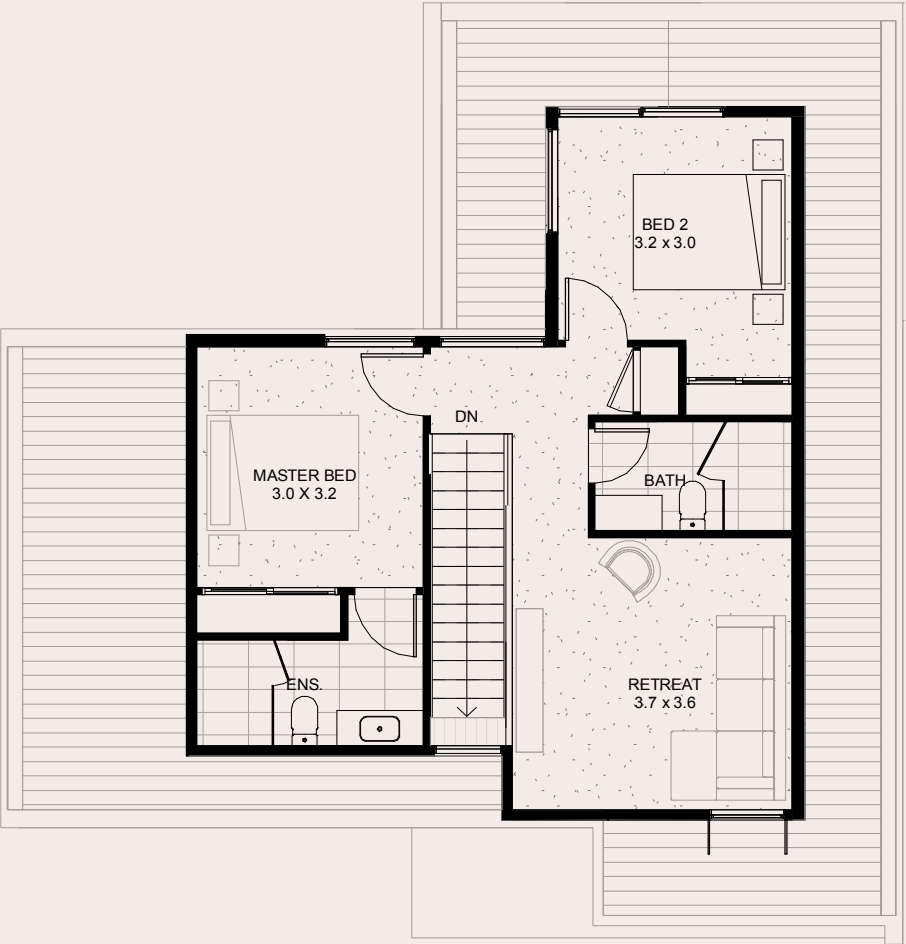


Note: All areas shown are approximate. The information contained herein has been obtained from sources we believe to be reliable and therefore have no reason to doubt it's accuracy. The vendor and it's agent will not be responsible for any error or mis-description which may appear. Prospective purchasers or leasees are therefore advised to make whatever investigations they deem necessary.

AIRDRIE COURT

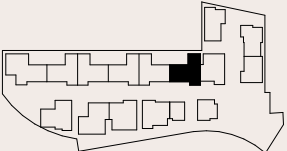


Ground Floor



First Floor

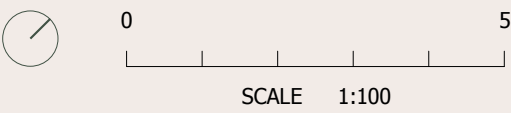
TOWNHOME 11	GROUND FLOOR	FIRST FLOOR	GARAGE	TOTAL AREA	LAND	OPEN SPACE
3 Bed 3 Bath 2 Car	66m ²	59m ²	39m ²	164m ²	157m ²	47m ²



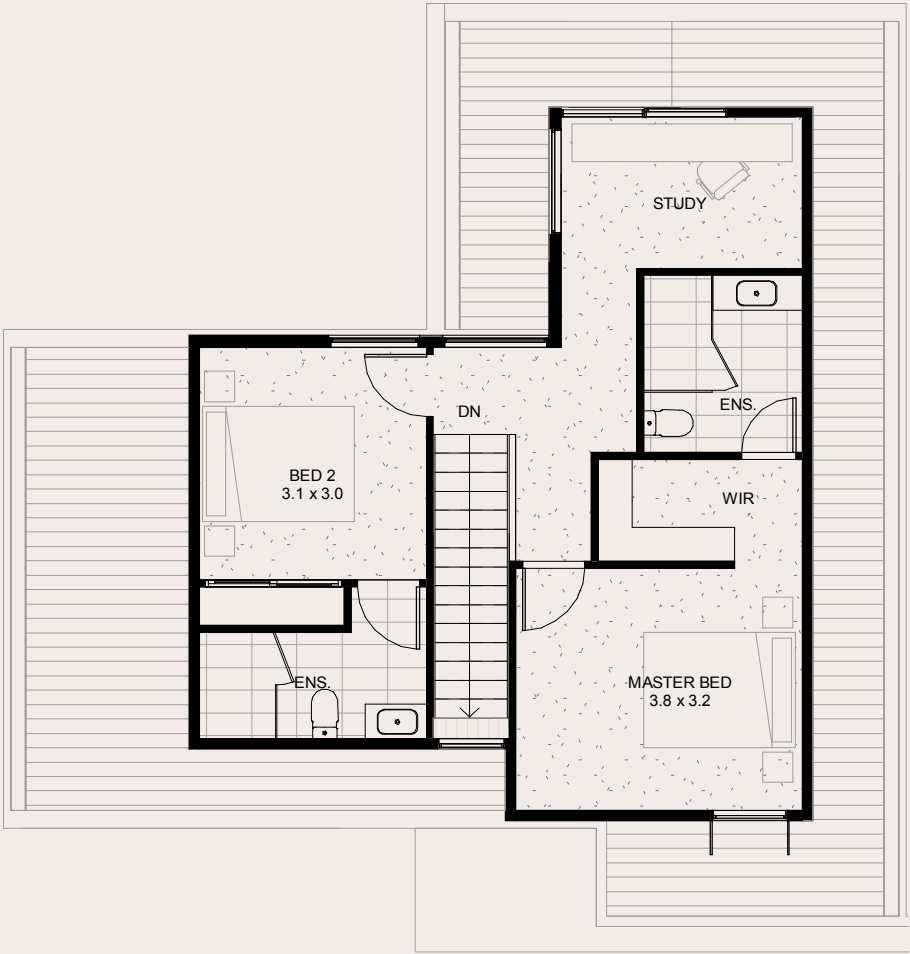
Airdrie Court

Note: All areas shown are approximate. The information contained herein has been obtained from sources we believe to be reliable and therefore have no reason to doubt it's accuracy. The vendor and it's agent will not be responsible for any error or mis-description which may appear. Prospective purchasers or leasees are therefore advised to make whatever investigations they deem necessary.

AIRDRIE COURT

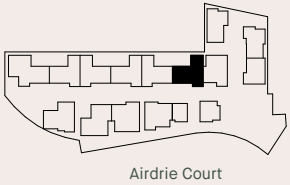


Ground Floor



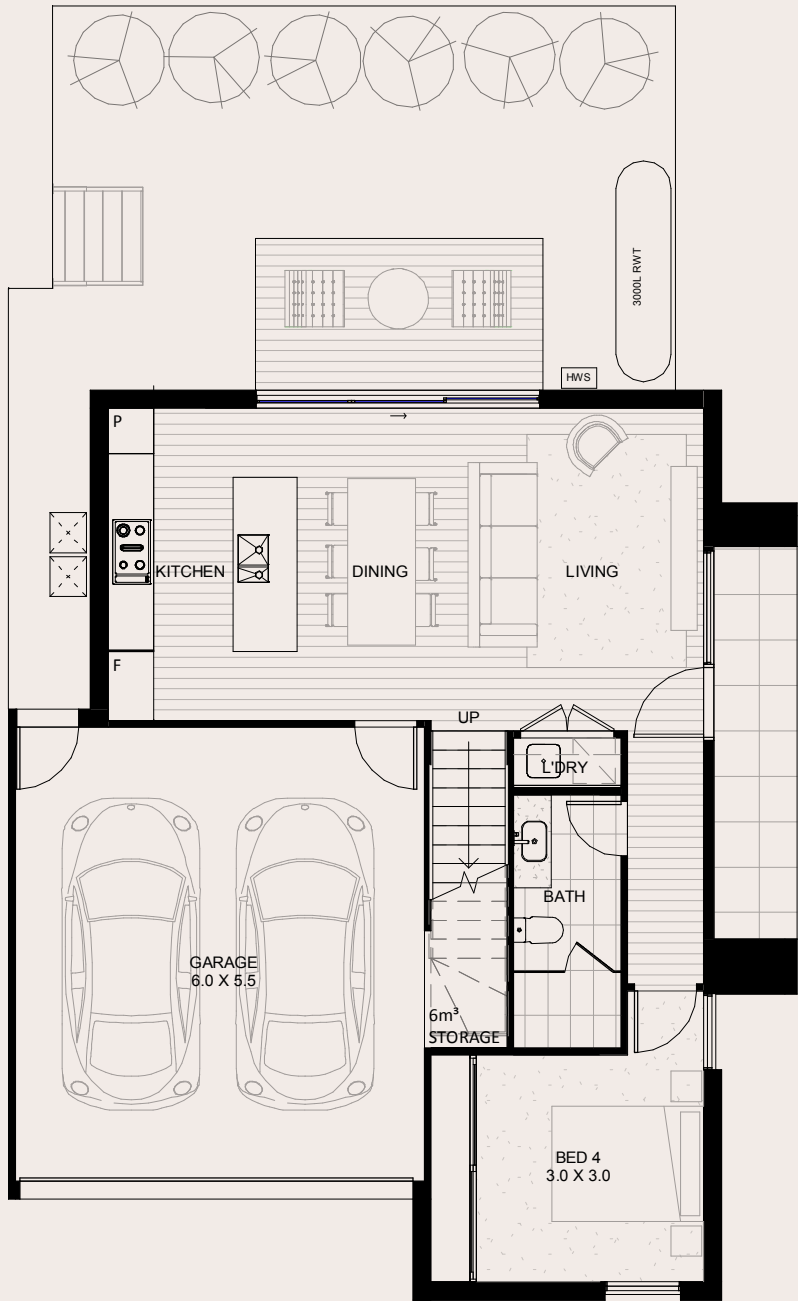
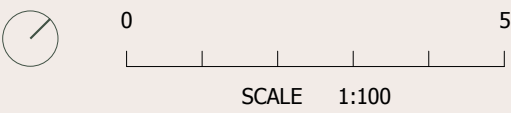
First Floor

TOWNHOME 11	GROUND FLOOR	FIRST FLOOR	GARAGE	TOTAL AREA	LAND	OPEN SPACE
3 Bed 3 Bath 2 Car	66m ²	59m ²	39m ²	164m ²	157m ²	47m ²

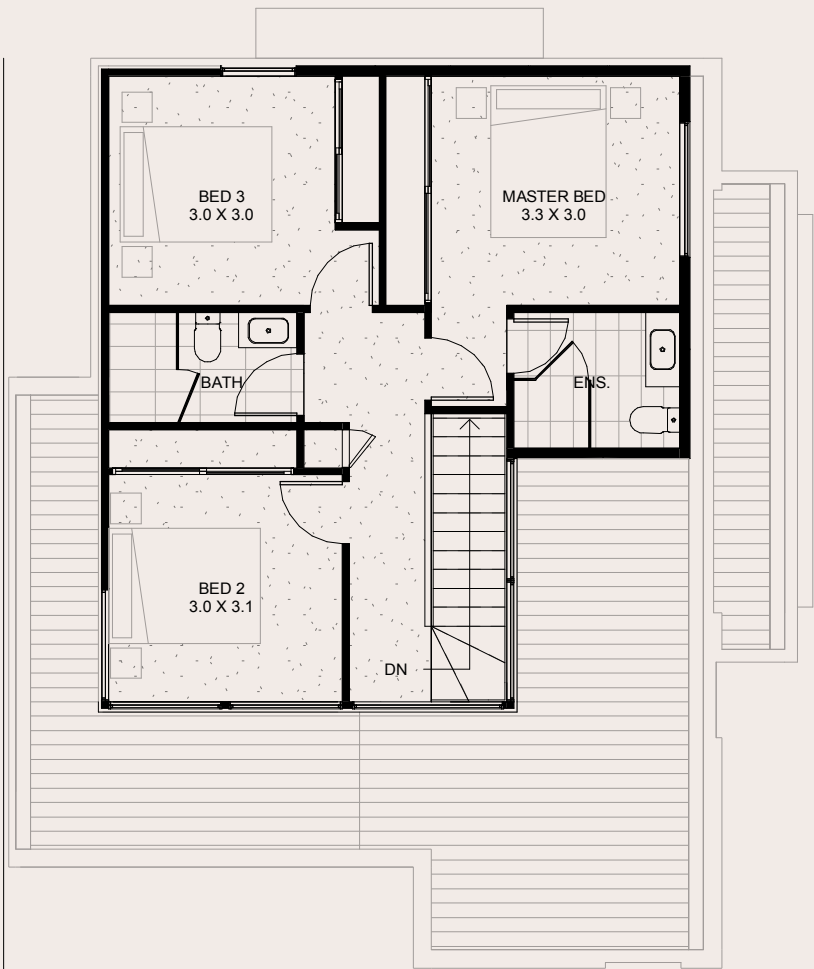


Note: All areas shown are approximate. The information contained herein has been obtained from sources we believe to be reliable and therefore have no reason to doubt it's accuracy. The vendor and it's agent will not be responsible for any error or mis-description which may appear. Prospective purchasers or leasees are therefore advised to make whatever investigations they deem necessary.

AIRDRIE COURT



Ground Floor

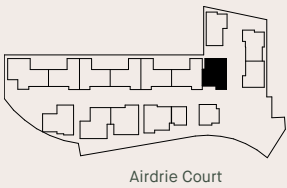


First Floor

TOWNHOME 12

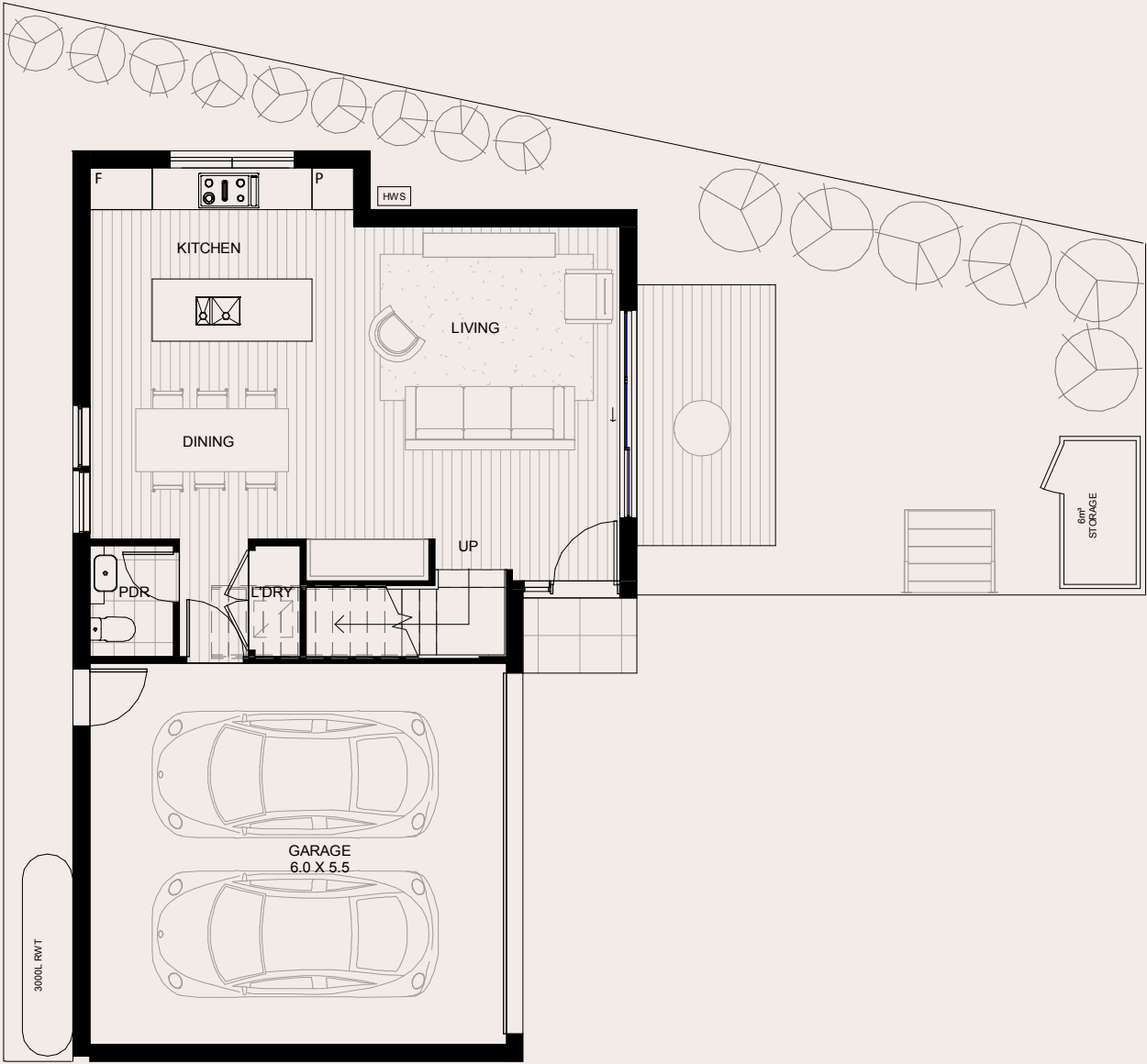
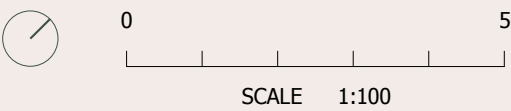
4 Bed | 3 Bath | 2 Car

GROUND FLOOR	FIRST FLOOR	GARAGE	TOTAL AREA	LAND	OPEN SPACE
67m ²	59m ²	35m ²	160m ²	155m ²	47m ²

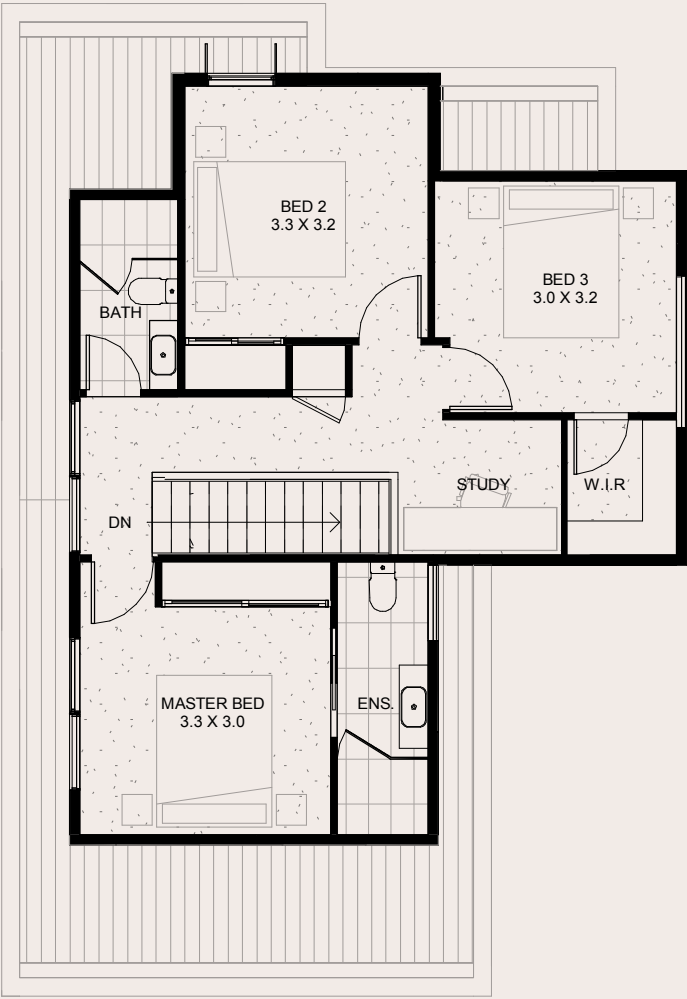


Note: All areas shown are approximate. The information contained herein has been obtained from sources we believe to be reliable and therefore have no reason to doubt it's accuracy. The vendor and it's agent will not be responsible for any error or mis-description which may appear. Prospective purchasers or leasees are therefore advised to make whatever investigations they deem necessary.

AIRDRIE COURT

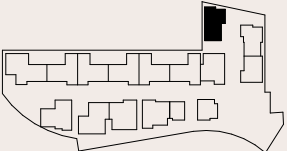


Ground Floor



First Floor

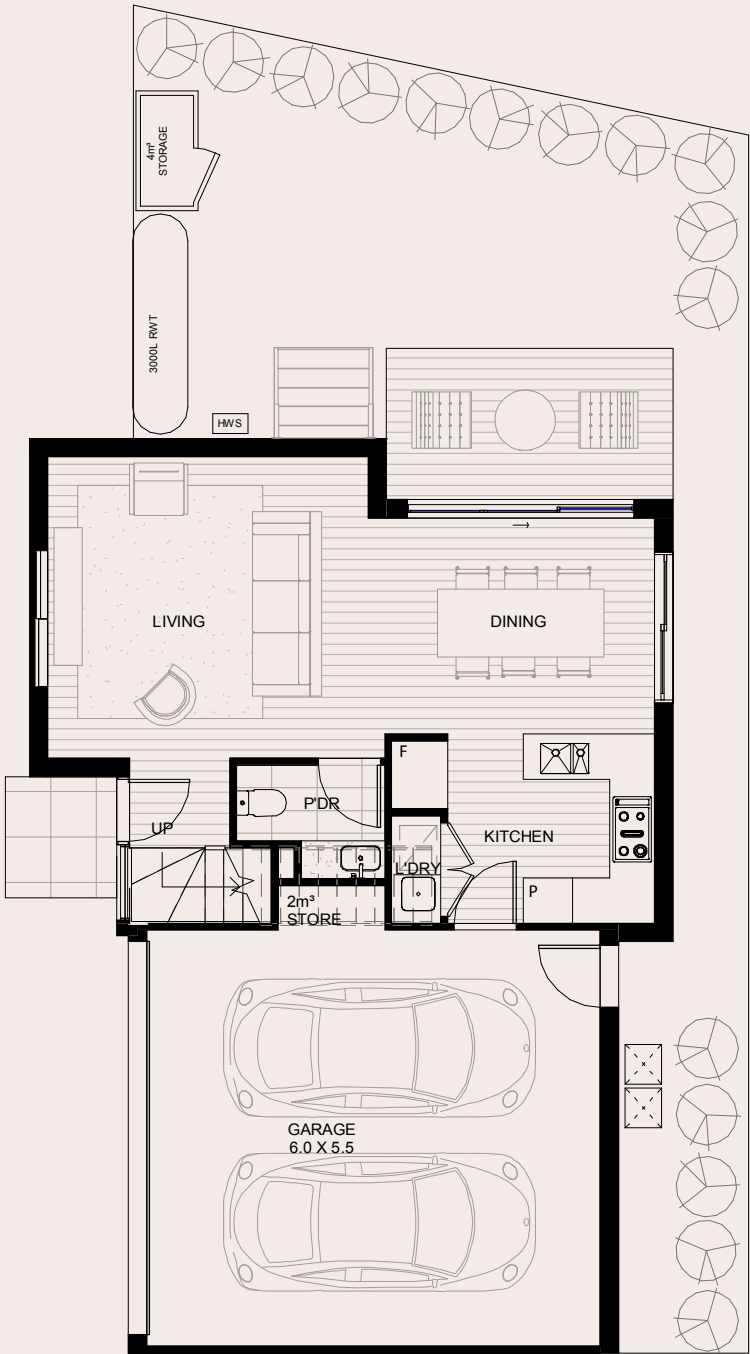
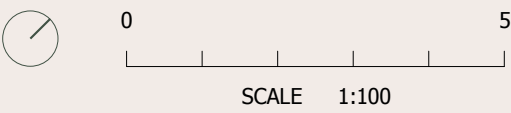
TOWNHOME 13	GROUND FLOOR	FIRST FLOOR	GARAGE	TOTAL AREA	LAND	OPEN SPACE
3 Bed 2.5 Bath 2 Car	55m ²	65m ²	37m ²	157m ²	164m ²	70m ²



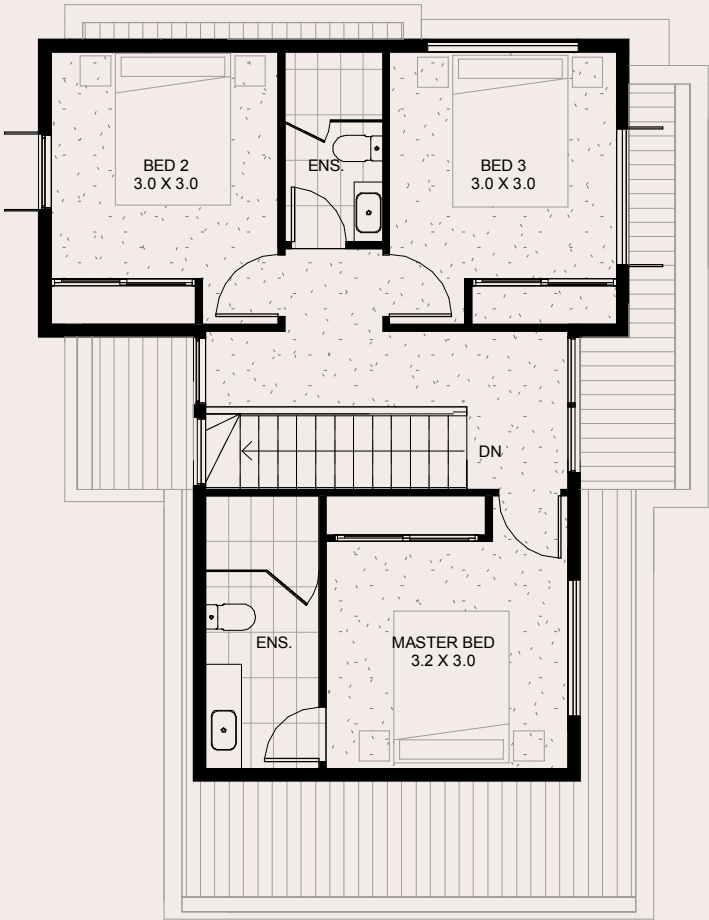
Airdrie Court

Note: All areas shown are approximate. The information contained herein has been obtained from sources we believe to be reliable and therefore have no reason to doubt it's accuracy. The vendor and it's agent will not be responsible for any error or mis-description which may appear. Prospective purchasers or leasees are therefore advised to make whatever investigations they deem necessary.

AIRDRIE COURT



Ground Floor

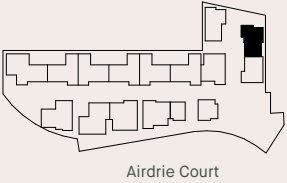


First Floor

TOWNHOME 14

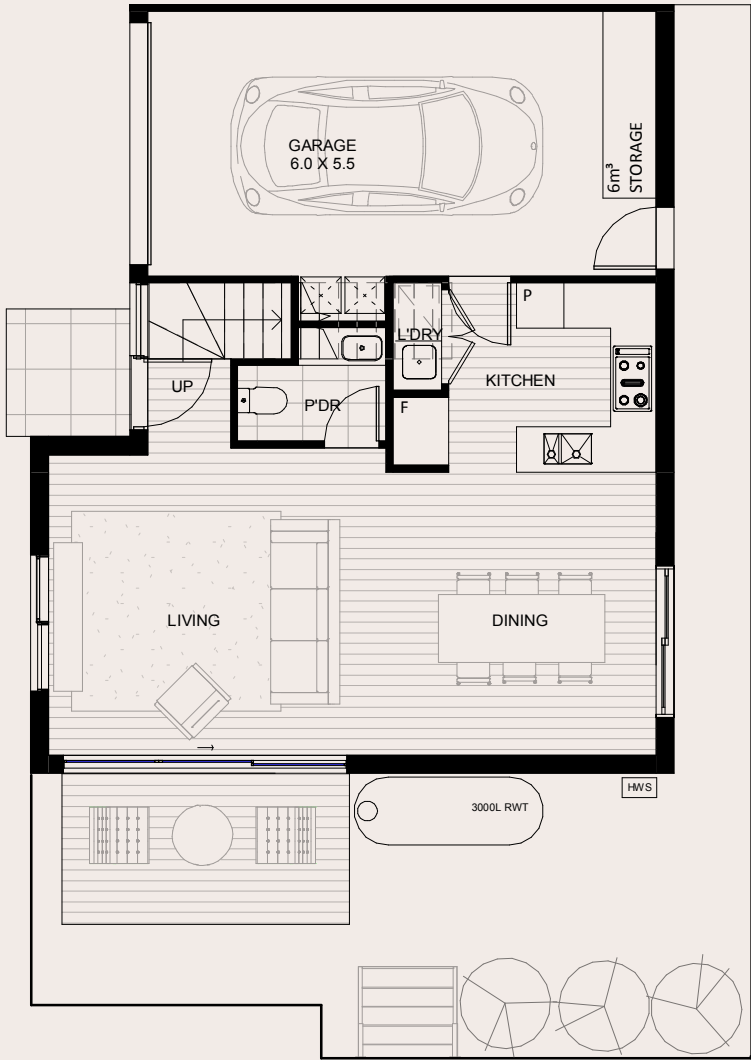
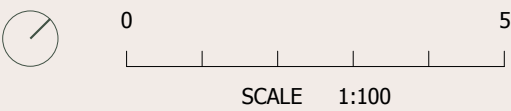
3 Bed | 2.5 Bath | 2 Car

GROUND FLOOR	FIRST FLOOR	GARAGE	TOTAL AREA	LAND	OPEN SPACE
50m ²	60m ²	36m ²	146m ²	149m ²	59m ²

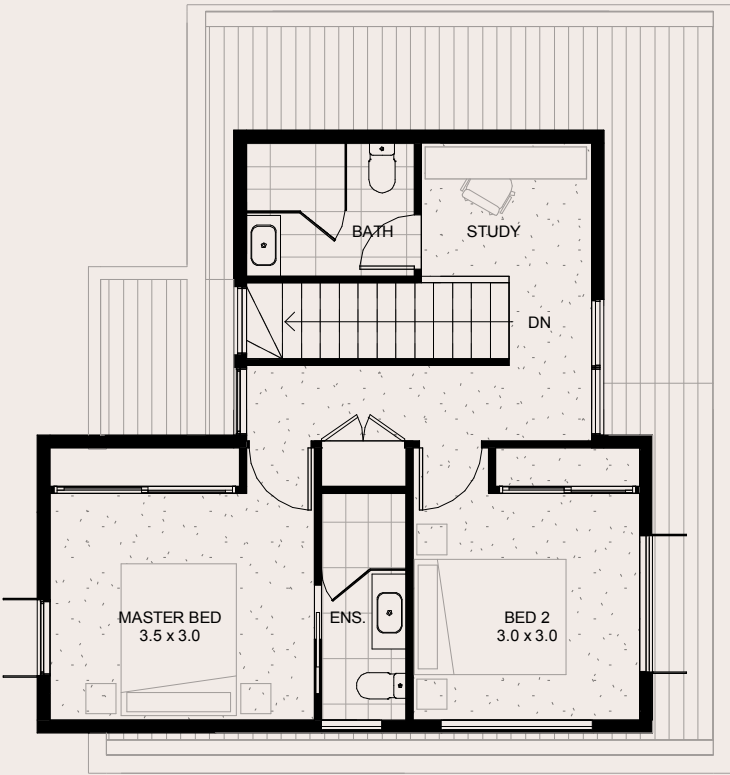


Note: All areas shown are approximate. The information contained herein has been obtained from sources we believe to be reliable and therefore have no reason to doubt it's accuracy. The vendor and it's agent will not be responsible for any error or mis-description which may appear. Prospective purchasers or leasees are therefore advised to make whatever investigations they deem necessary.

AIRDRIE COURT



Ground Floor

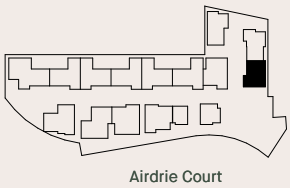


First Floor

TOWNHOME 15

2 Bed | 2.5 Bath | 1 Car

GROUND FLOOR	FIRST FLOOR	GARAGE	TOTAL AREA	LAND	OPEN SPACE
51m ²	59m ²	28m ²	138m ²	128m ²	43m ²



Note: All areas shown are approximate. The information contained herein has been obtained from sources we believe to be reliable and therefore have no reason to doubt it's accuracy. The vendor and it's agent will not be responsible for any error or mis-description which may appear. Prospective purchasers or leasees are therefore advised to make whatever investigations they deem necessary.